



ST. EDWARD EAGLES

2023 GAME NOTES



28 PLAYOFF APPEARANCES 12 REGIONAL TITLES 12X STATE SEMI-FINALIST
STATE CHAMPS 2010, 2014, 2015, 2018, 2021, 2022

2023 SCHEDULE / RESULTS

| | |
|--|---|
| | Aug. 19, 12:00 p.m. Center Grove (Indiana) Tom Benson Hall of Fame Stadium W 27-10 1-0 |
| | Aug 27, 1:00 p.m. Our Lady of Good Counsel (Md) First Federal Lakewood Stadium W 28-7 2-0 |
| | Sept. 2, 3:00 p.m. Rock Creek Christian (Md.) First Federal Lakewood Stadium W 42-14 3-0 |
| | Sept. 9, 4:00 p.m. @ Cincinnati Elder The Pit W 34-33 4-0 |
| | Sept. 15, 7:00 p.m. @ Massillon Washington Paul Brown Tiger Stadium L 15-13 4-1 |
| | Sept. 23, 2:00 p.m. River Rouge (Mi) First Federal Lakewood Stadium W 42-6 5-1 |
| | Sept. 30, 7:00 p.m. St. Ignatius First Federal Lakewood Stadium W 42-7 6-1 |
| | Oct. 7, 3:00 p.m. Football North (Canada) First Federal Lakewood Stadium W 35-15 7-1 |
| | Oct. 14, 4:00 p.m. Cincinnati Moeller First Federal Lakewood Stadium |
| | Oct. 20, 7:00 p.m. @Akron Hoban Dowed Field |



WE ARE ST. ED'S

When referencing St. Edward Athletics,
PLEASE USE ST. EDWARD OR ST. ED'S.
Please refrain from using St. Edwards.

St. Edward Eagles



Vs

Cincinnati Archbishop Moeller



- 2023 RECORD 7-1
- 2022 RECORD 15-1
- 2021 RECORD 15-1
OHSAA D1 State Champs
- **2023 Rankings**
Cleveland.Com top 25 # 2
OHIO AP D1 # 1
Maxpreps # 23
HSFBA # 16
SB Live/SI # 14
- Last game: Beat Football North 35-18
Streak Won 3

- 2023 Record 5-3
- 2022 Record 13-2
- 2021 Record 11-4
- **2023 rankings :**
Ohio AP Poll D1 #10
Max Preps Ohio #7
HSFBA #97
- **Last Game:** Beat St. Ignatius 47-7
- Streak : won 4

MATCHUP/HISTORY

This will be the 25th matchup with Archbishop Moeller.

The Eagles lead the series 14-10.

The two schools first met on the field at the 1975 State Championship Game where the Crusaders beat the Eagles 14-12.

There was no game between the schools in 2020 due to the covid pandemic.

The Eagles won 11 of the last 12 games between the two games.

GAME INFORMATION

DateSat. Oct 14

Kickoff Time.....4:00 P.M.

Location.. First Federal Lakewood Stadium

Surface.....Field Turf

Internet ... Audio/Video

www.stedwardeagles.com

Eagles Sports Network

Adam Mendoza (Play-by-Play)

Carmen Angelo (Analyst)

TV...Bally Sports Great Lakes (Tape Delay Sunday)

Radio:None



ST. EDWARD EAGLES FOOTBALL

28 PLAYOFF APPEARANCES 12 REGIONAL TITLES 12X STATE SEMI-FINALIST

STATE CHAMPS 2010, 2014, 2015, 2018, 2021, 2022

Coaching Match-Ups

St. Edward High School
Tom Lombardo (9th Yr.)
 2015, 2018, 2021, 2022
 Division One State Champions



This Week's Game / Opponent

St. Edward concludes its home portion of the schedule this week against Archbishop Moeller. This will be the 25th meeting between the two schools that dates back to 1975.

Moeller is on a four game win streak after starting the season 1-3. They defeated St. Ignatius last week 47-7. Jordan Marshall, a Michigan Commit, is the all-time leading rusher at Moeller with over 4,100 yards. Karson Hobbs, a Notre Dame commit leads the defense for first year coach Bart Bathiany.

The Eagles are coming off a 35-15 win over Football North. They are the top rated team in the state of Ohio, but currently sit in fourth place in Division One Region playoffs.

Saturdays game will be streamed at StEdwardeagles.com and be shown on Tape delay on Bally Sports Great Lakes.

THE LOMBARDO FILE

| YEAR | REG SEASON | PLAYOFFS | TOTAL |
|----------------------|---------------|--------------|---------------|
| 1999 | 8-2 | 0-1 | 8-3 |
| 2000 | 7-3 | 0-1 | 7-4 |
| 2001 | 8-2 | 5-0 | 13-2 |
| Lake Catholic | 23-7 | 5-2 | 28-9 |
| 2007 | 6-4 | N/A | 6-4 |
| 2008 | 9-1 | 2-1 | 11-2 |
| 2009 | 6-4 | 0-1 | 6-5 |
| 2010 | 4-6 | N/A | 4-6 |
| 2011 | 6-4 | 0-1 | 6-5 |
| 2012 | 7-3 | N/A | 7-3 |
| 2013 | 10-0 | 3-1 | 13-1 |
| 2014 | 8-2 | 0-1 | 8-3 |
| Highland | 56-24 | 5-5 | 61-29 |
| 2015 | 9-1 | 5-0 | 14-1 |
| 2016 | 7-2 | 2-1 | 9-3 |
| 2017 | 9-1 | 1-1 | 10-2 |
| 2018 | 6-3 | 5-0 | 11-3 |
| 2019 | 9-1 | 2-1 | 11-2 |
| 2020 | 5-1 | 1-1 | 6-2 |
| 2021 | 9-1 | 6-0 | 15-1 |
| 2022 | 9-1 | 6-0 | 15-1 |
| 2023 | 6-1 | 0-0 | 7-1 |
| St. Edward | 69-12 | 28-4 | 98-16 |
| TOTAL | 149-43 | 37-11 | 187-54 |

Series History

SERIES HISTORY: St. Ed's Leads Series 14-10

1975 Moeller 14-12 (State Championship game)

1978 Moeller 17-14

1979 Moeller 27-9

1981 Moeller 42-8

1982 Moeller 35-14

2003 Moeller 17-14

2004 St. Edward 41-17

2005 St. Edward 28-12

2006 St. Edward 17-7

2007 Moeller 31-28

2008 Moeller 33-29

2009 Moeller 40-10

2010 St. Edward 31-7

2011 St. Edward 42-27

2012 St. Edward 49-42

2013 St. Edward 45-42

2014 St. Edward 24-10

2015 St. Edward 49-17

2016 St. Edward 24-21

2017 St. Edward 31-7

2018 St. Edward 29-22

2019 St. Edward 34-7

2021 Moeller 28-21 OT

2022 St. Edward 6-0

Bart Bathiany 1st Year

Overall Record 5-3

Record Vs St. Edward 0-0



ST. EDWARD EAGLES FOOTBALL

28 PLAYOFF APPEARANCES 12 REGIONAL TITLES 12X STATE SEMI-FINALIST

STATE CHAMPS 2010, 2014, 2015, 2018, 2021, 2022



All of the Eagles Football games will be streamed over the internet once again this season at StEdwardEagles.com.

Six game will be televised on tape delay on Bally Sports Great Lakes for a second straight year. Adam Mendoza and Carmen Angelo are back for their 17th season of St. Edward Football.

Media Requests

Updated football game notes are available in PDF format at www.Stedwardeagles.com. To receive the notes via e-mail, contact Adam Mendoza at Amendoza@sehs.net

CREDENTIALS: All members of the media wishing to cover games in a working capacity must seek appropriate press or photo/video passes in advance. Requests should be made at least one week in advance of game day on Stedwardeagles.com. They will be left at the will-call window at First Federal Lakewood Stadium.

All interviews with players and coaches must be coordinated through the Athletic Dept. Media members should call at least one day in advance for interviews.

Opponent at a Glance

| | | | |
|-------|------------------------------|---|----------|
| 8/18 | Ben Davis (IN) | L | 28-49 |
| 8/25 | Ft Wayne Bishop Dwenger (IN) | W | 57-0 |
| 9/1 | East Central (IN) | L | 28-38 |
| 9/8 | Center Grove (IN) | L | 34-35 ot |
| 9/15 | St Xavier | W | 20-10 |
| 9/22 | La Salle | W | 28-20 |
| 9/29 | Elder (5-3) | W | 38-7 |
| 10/7 | St Ignatius | W | 47-7 |
| 10/14 | St Edward | | |
| 10/20 | Detroit King | | |

Tale of the Tape

| St. Edward | 2023 | Moeller |
|------------|---------------------|---------|
| 7-1 | Record | 5-3 |
| 32.9 | Points Avg. | 35 |
| 304.9 | Total Offense Avg. | 387.9 |
| 145.0 | Rushing Avg. | 169.4 |
| 159.9 | Passing Avg. | 218.5 |
| 14.1 | Points Against Avg. | 20.7 |
| 225 | Total Defense Avg. | 325.8 |
| 133.5 | Rush Defense Avg. | 150.1 |
| 91.5 | Pass Defense Avg. | 175.6 |

2023 Ohio AP Poll D1

| | | |
|--|------------|-----|
| 1. St. Edward (9) | 7-1 | 171 |
| 2. Pickerington North (3) | 8-0 | 146 |
| 3. Hilliard Bradley (3) | 8-0 | 138 |
| 4. Cincinnati Princeton | 8-0 | 110 |
| 5. Milford (1) | 8-0 | 109 |
| 6. Gahanna Lincoln | 8-0 | 92 |
| 7. Canton McKinley (1) | 7-1 | 90 |
| 8. Lewis Center Olentangy (1) | 7-1 | 69 |
| 9. Centerville (2) | 7-1 | 33 |
| t10. Archbishop Moeller Delaware Olentangy Be | 5-3 7-1 | 32 |



ST. EDWARD EAGLES FOOTBALL

28 PLAYOFF APPEARANCES 12 REGIONAL TITLES 12X STATE SEMI-FINALIST

STATE CHAMPS 2010, 2014, 2015, 2018, 2021, 2022

GAME PREVIEW:

By Norm Webe

LAKEWOOD – One thing about this week's varsity football game, the Eagles are getting a lately hot running team in Moeller, and it's going to take a lot of preparing for this game.

The Eagles-Crusaders game is slated for 4 p.m. Saturday inside First Federal Lakewood Stadium. "They are really playing well; they have a good win streak here," St. Edward Head Coach Tom Lombardo said. "They have a new coach and possibly a new staff. It might have taken a little adjustment early and they played a tough schedule, but they've hit their stride and Jordan Marshall is everything everyone says he is."

Marshall, a University of Michigan recruit, is the huge running back for Moeller who has run roughshod over the opponents this season.

"They want to establish the run with him, no question about it," Coach Lombardo said. "They use their play action game off him, off that edge, so we are going to have to be ready for it. It's a similar offense to what they've been running the last couple years." Moeller (5-3) lost three of its first four games of the season, but has won four straight, firing in upper gear.

One gauge to measure this game is common opponents. There have been three schools both have had a date with. The Eagles defeated Center Grove at the start of the season, but then the Crusaders lost to the same team by one point, 35-34. Both have defeated Elder and St. Ignatius.

Moeller has won the Greater Catholic League with a 3-0 record.

Marshall leads the GCL in rushing with 1,105 yards. Quarterback Matt Ponatoski is second in the league with 1,618 through the air.

Defensively, Moeller has two of the top four tacklers in the league in Kyler Paul, and Alex French. Also defensively, Moeller likes to pick off passers. Drew Robinson has five interceptions, Nick Leonard three, and Karson Hobbs two.

"They tweaked their defense a little bit," Lombardo said. "They'll give you a couple multiple fronts. They have a corner going to Notre Dame (Hobbs), and a defensive end going to Virginia (Jewett Hayes).

They have a transfer from Hoban (Micah Rice), a safety starting to perform and doing well."

On offense they have the Michigan recruit, that tailback, Marshall.

With three different throwers the past three games,

the Eagles (7-1) have completed three touchdown passes in each game

"That's what we thought we could do," Lombardo said. "Casey's doing a really nice job, all our quarterbacks are, of reading the coverage. The ball handling is set up to pass off the run action, which is very important."

Moeller, from reports, does this well as well.

"That's what happens when you are able to establish a good running game and are able to take some shots down the field," Coach Lombardo said.

In the running game, the Eagles have been able to get four or six yards per play to keep the ball moving toward first downs and ultimately the end zone.

"That's what we've been doing," Coach Lombardo said. "It starts with the blocking up front and the ball carrier finding the hole and the ability to get those four or six yards, which allows us to move the chains and be in an advantageous position on offense," the coach concurred. "We can feel free about taking a shot or throwing the ball down the field and still have a manageable third down."

Against Football North via Clarkson Secondary School, the Eagles had to battle a huge offensive line as big as or bigger than the Eagles.'

"As a whole, I thought they were. They were big and strong," Coach said. "They had a good offensive line with some good schemes. That was a tough, physical game."

The St. Edward defense is timely. They get the stop when they need to.

"That's how we've been playing," Lombardo concurred. "The red zone is where we made some key plays and blocked a field goal attempt."

The Eagles are going to have to take it a step higher to defeat this red hot Moeller outfit.

"We have to shore up and get our run game down pat as we approach these last two games in the playoffs," the coach noted.

The Eagles have already clinched a home game for the playoffs and are on the cusp of getting two by finishing in the top four in the computer rankings.

They are now fourth.

"Yes, we certainly want that (two home games) and it is important," Coach Lombardo said. "We want to get in that top four and we are hovering there right now."

For the second week in a row, the St. Edward offensive unit committed no turnovers and the whole team won the turnover ratio battle both outings.

ST. EDWARD EAGLES FOOTBALL

28 PLAYOFF APPEARANCES 12 REGIONAL TITLES 12X STATE SEMI-FINALIST

STATE CHAMPS 2010, 2014, 2015, 2018, 2021, 2022



PLAYER OF THE GAME:

Sophomore Wide receiver Zack Hackleman caught 4 passes for 86 yards and 2 touchdowns against Canada North.

Those were his first touchdown receptions of his varsity career.

BY THE NUMBERS:

Avg score SEHS 25.6
MOE 19.4

St. Ed's leads series 14-10

Biggest Margin of Victory :
Moeller 1981 - 34
St. Ed's 2019 -27

Most Combined Points: 87 2012
Least Combined Points: 6 2021

PLAYOFF PROJECTION:

If the playoffs started this week, the Eagles would host St. Ignatius. The latest computer points has the Eagles #4 and St. Ignatius at #13.

EXPLOSIVE PLAYS:

Coach Tom Lombardo will be seeking his 150th regular season win on Saturday. He has 149 wins while coaching Lake Catholic, Highland and St. Edward.

TD STREAK:

The Eagles touchdown streak is at fifteen games

St. Ed's 31 game TD streak was snapped last season in a 6-0 win over Cincinnati Moeller.

EXPLOSIVE PLAYS:

St. Ed's had five plays for more than 20 yards vs Football North with three of them for touchdowns.

The Eagles have 36 plays this season over 20 yards. Fourteen of those plays went for td's.

Last season the Eagles had 52 explosive plays, 15 went for touchdowns.

OFFENSIVE NOTES:

- Brandon White is the only Eagle to rushed for over 100 yards game. (144 vs Elder)
- Casey Bullock season hi passing yards 257 yards vs St. Ignatius
- 2 games over 400 yards total offense
- Kyan Mason, Zack Hackelman and Brian Sullivan all have over 300 plus yards receiving



RECRUITING WATCH:

Committed:

Ben Roebuck: Michigan
Deontae Armstrong: Ohio St.
Devontae Armstrong: Ohio St.
Troy Regovich: Northwestern
Casey Bullock: Davidson
Loghan Thomas: Notre Dame
Michael Balogh : Colgate
Kyan Mason: U of Akron

TOP OF THE CHARTS:

Tom Lombardo is the winningest coach at St. Edward. He passed his father -in-law John Gibbons for most wins at St. Ed's in 2021.

Top Overall Coaching Records

| | |
|---------------------|---------------------|
| Tom Lombardo | (97) # # # # |
| John Gibbons | (73) |
| Rick Finotti | (62) # # |
| Dan Flaherty | (56) |
| Jim McQuade | (54) |

State Championships

DEFENSIVE NOTES:

- Jon Slaper 92 tackles, Nate Gregory with 80
- Loghan Thomas has 14.5 tackles for loss and 5.5 sacks.
- Tayvin Shaw 2 interceptions.

The Eagles streak of holding opponents under 40 points a game is now at 71 games.

Jon Slapper has an interception and fumble returns for td's, while Eddie Andrews has a kickoff return for a touchdown.

Troy Regovich has a block punt recovery for a touchdown

ST. EDWARD EAGLES FOOTBALL

28 PLAYOFF APPEARANCES 12 REGIONAL TITLES 12X STATE SEMI-FINALIST

STATE CHAMPS 2010, 2014, 2015, 2018, 2021, 2022

DOWN TO THE WIRE:

The Eagles and Crusaders have played nine games being decided by 7 points or less.

But in the last thirteen years six games came down to the end.

- 2007, Jeff Burke caught an Alex Lavisky pass to tie the game at 28. Moeller's Mike Hartman hit a 22 yard field goal to give the Crusaders a 31-28 win.
- 2008, St. Ed's Kicker Mike DiNunzio hits a 44 yard field goal with 15 seconds remaining. Tony Harris of the Crusaders ran the ensuing kickoff back 91 yards for the 33-29 win.
- 2012, Moeller has a 42-21 lead in the third quarter and the Eagles would score 4 straight touchdowns that was capped by a 26 yard td run by Dwayne Aaron to help propel the Eagles to a 49-42 win.
- 2013, The Eagles jump out to a 38-14, Moeller makes a valiant comeback and cuts the lead to 38-35. St. Ed's then takes a 45-35 lead. Moeller scores with two minutes left to cut the score to 3. The Eagles would get a big first down to seal the win on their final possession of the game.
- 2016, Moeller tied game at 21 with two and half minutes in the game. The Eagles would march down and Mason Lawler would hit a 45 yard field goal with four second left for the win.
- Moeller's Kevin Thibodeaux hits an 18 yard FG to put the Crusaders up 22-21 with 3:00 minutes left. St. Ed's Quintel Kent's touchdown with less than a minute for the win.
- 2020 Moeller scores in Overtime and comes up with interception to seal the win.

MOELLER NOTES:

- Bart Bathany is in his first year as Head Coach. He is the fifth coach in six years. 15th coach in program history.
- 5 National Championships
9 OHSAA State Titles
29 GCL Titles
35 Playoff appearances
- Jordan Marshall all time rushing leader at school and is a Michigan commit.
- Karson Hobbs: Notre Dame
Jewitt Hayes : Virginia
Eli Jacob Duffy: BGSU
Matt Ponotaski: Missouri (baseball)



PLAYER RANKINGS:

According to 247 Sports:

| | |
|--------------------|-----|
| Loghan Thomas | #5 |
| Ben Roebuck | #19 |
| Devontae Armstrong | #20 |
| Deontae Armstrong | #21 |
| Cam Boone | #54 |
| Troy Regovich | #80 |
| Kyan Mason | #84 |
| Michael Balogh | #93 |
| Jordan Marshall | #8 |
| Karson Hobbs | #22 |
| Jewitt Hayes | #53 |

TAKE IT TO THE HOUSE:

Eddie Andrews 79 yard kick return for a touchdown vs RCCA is one of a select long returns since 2010.

Longest Kick returns since 2010:

| | |
|----------------------|--------------------|
| Anthony Young | 99 yds 2012 |
| Shaun Crawford | 99 yds 2014 |
| Kyan Mason | 99 yds 2022 |
| Joe Formani | 98 yds 2019 |
| Kyan Mason | 96 yds 2021 |
| Joel Castleberry | 95 yds 2020 |
| Quintel Kent | 94 yds 2018 |
| Anthony Young | 93 yds 2011 |
| Kyan Mason | 92 yds 2021 |
| Joe Formani | 92 yds 2019 |
| Carlton Landingham | 80 yds 2021 |
| Logan Nash | 90 yds 2019 |
| Kyle Fallon | 87 yds 2015 |
| Caden Kolesar | 86 yds 2018 |
| Carlton Landingham | 80 yds 2021 |
| Eddie Andrews | 79 yds 2023 |

ST. EDWARD EAGLES FOOTBALL

28 PLAYOFF APPEARANCES 12 REGIONAL TITLES 12X STATE SEMI-FINALIST

STATE CHAMPS 2010, 2014, 2015, 2018, 2021, 2022

EAGLES BY THE NUMBERS 2023

| | | | | | |
|---------------------------------------|-------------------|------------|-----|---------|-----|
| Home | 4-0 | Away | 1-1 | Neutral | 1-0 |
| Natural grass | 0-0 | Field turf | 5-1 | | |
| Night game | 1-1 | Day game | 6-0 | | |
| Wearing Gold Jerseys | | | 0-0 | | |
| Wearing White Jerseys | | | 1-1 | | |
| Wearing Green Jerseys | | | 5-0 | | |
| Wearing Black Jerseys | | | 1-0 | | |
| Leading after 1st quarter | | | 5-0 | | |
| Trailing after 1st quarter | | | 1-0 | | |
| Tied after 1st quarter | | | 1-1 | | |
| Leading at Halftime | | | 5-0 | | |
| Trailing at Halftime | | | 1-1 | | |
| Tied at Halftime | | | 1-0 | | |
| Leading After Three Quarters | | | 7-0 | | |
| Trailing After Three Quarters | | | 0-1 | | |
| Tied after 3rd quarter | | | 0-0 | | |
| <i>Leads In Time of Possession</i> | | | 2-0 | | |
| <i>Trailing In Time of Possession</i> | | | 5-1 | | |
| Winning the Turnover Margin | | | 4-0 | | |
| Losing the Turnover Margin | | | 2-1 | | |
| Turnover Margin Tied | | | 1-0 | | |
| Score on First Possession | | | 5-0 | | |
| Gaining More Yards Than Opponent | | | 7-0 | | |
| Rushing 100+ Yards | | | 6-1 | | |
| Passing 100+ Yards | | | 6-1 | | |
| Passing 150+ Yards | | | 4-1 | | |
| Passing 200+ Yards | | | 1-0 | | |
| Opponent Under 100 Yards Rushing | | | 3-0 | | |
| Opponent Under 100 Yards Passing | | | 3-1 | | |
| Opponent Under 200 Yards Passing | | | 5-1 | | |
| Scoring 19 points of less | | | 0-1 | | |
| Scoring 20-29 points | | | 2-0 | | |
| Scoring 30-39 points | | | 3-0 | | |
| Scoring 40-49 points | | | 2-0 | | |
| Largest Halftime lead | 35 vs River Rouge | | | | |
| | 28 vs Rock Creek | | | | |
| Largest Halftime deficit | 6 vs Elder | | | | |
| Playing After a Win | | | 6-1 | | |
| Playing After a Loss | | | 1-0 | | |

EAGLES IN OVERTIME

The Eagles are 7-6 in overtime games since 1987. St. Ed's is 2-2 in OT playoff games and 5-4 in regular season OT games

| | |
|--|----------------------|
| 2021 MOELLER DEFEATED ST. EDWARD | 28-21 (1OT) |
| 2019 MENTOR DEFEATED ST. EDWARD | 36-35 (1 OT) |
| | (REGIONAL FINAL) |
| 2016 ST. IGNATIUS DEFEATED ST EDWARD | 38-31(1 OT) |
| 2011 ST. EDWARD DEFEATED GLENVILLE | 17-14 (1 OT) |
| 2005 ST. EDWARD DEFEATED BENEDICTINE | 41-38 (3 OT) |
| 2003 ST. EDWARD DEFEATED MENTOR | 13-10 (1 OT) |
| | (REGIONAL FINAL) |
| 2003 WARREN HARDING DEFEATED ST. EDWARD | |
| | 27-20 (1 OT) |
| 2001 ST. EDWARD DEFEATED MAYFIELD | 35-28 (2 OT) |
| | (REG QUARTER FINAL) |
| 2001 ST. EDWARD DEFEATED ST. IGNATIUS | 44-41 (1 OT) |
| 1997 ELDER DEFEATED ST EDWARD | 35-28 (3 OT) |
| 1996 ST. EDWARD DEFEATED ST. IGNATIUS | 12-9 (1 OT) |
| 1993 ST. IGNATIUS DEFEATED ST EDWARD | 35-34 (3 OT) |
| 1989 ST. EDWARD DEFEATED LAKEWOOD | 10-7 (1 OT) |



St. Edward Vs. Non-Ohio Teams (84-10-1)

| | | | | | |
|-------------------|--------|-------------------|-----|--------------|-----|
| Vs. Pennsylvania | 29-5-1 | Vs. Florida | 4-0 | Vs. Maryland | 9-0 |
| Vs. Michigan | 8-2 | Vs. New York | 2-0 | Vs. Illinois | 2-0 |
| Vs. Washington DC | 10-0 | Vs. New Jersey | 2-3 | Vs. Virginia | 1-0 |
| Vs. Canada | 10-0 | Vs. Indiana | 4-0 | Vs. Colorado | 1-0 |
| Vs. Arkansas | 1-0 | Vs. Massachusetts | 1-0 | | |

| YEAR | W / L | St. Ed's | TEAM / SCHOOL | OPP |
|------|-------|----------|----------------------------------|-----|
| 1971 | L | 20 | Erie (PA) McDowell | 23 |
| 1972 | W | 41 | Erie (PA) McDowell | 14 |
| 1973 | W | 46 | Erie (PA) McDowell | 0 |
| 1976 | W | 14 | Detroit (MI) St. Thomas Aquinas | 12 |
| 1980 | W | 46 | Erie (PA) Tech | 7 |
| 1980 | W | 36 | Susquehanna (PA) | 7 |
| 1981 | W | 41 | Erie (PA) Cathedral Prep | 27 |
| 1982 | L | 8 | Erie (PA) Cathedral Prep | 30 |
| 1983 | W | 34 | Detroit (MI) Brablec | 7 |
| 1983 | W | 20 | Gateway (PA) | 14 |
| 1984 | W | 42 | Erie (PA) Tech | 0 |
| 1985 | W | 35 | Erie (PA) Tech | 0 |
| 1986 | W | 26 | Erie (PA) Tech | 7 |
| 1987 | T | 0 | Butler (PA) | 0 |
| 1988 | L | 10 | Erie (PA) Cathedral Prep | 14 |
| 1992 | L | 14 | Erie (PA) Cathedral Prep | 17 |
| 1993 | W | 31 | Erie (PA) Cathedral Prep | 21 |
| 1994 | W | 10 | Erie (PA) Cathedral Prep | 7 |
| 1995 | W | 67 | Detroit (MI) Southwestern | 6 |
| 1995 | W | 35 | Washington (DC) F.W. Ballow | 0 |
| 1995 | W | 17 | Erie (PA) Cathedral Prep | 7 |
| 1996 | W | 34 | Erie (PA) Cathedral Prep | 13 |
| 1996 | W | 34 | Washington (DC) F.W. Ballow | 0 |
| 1997 | W | 21 | Erie (PA) Cathedral Prep | 20 |
| 1997 | W | 55 | Washington (DC) F.W. Ballow | 8 |
| 1998 | W | 27 | Erie (PA) Cathedral Prep | 0 |
| 1999 | L | 6 | Erie (PA) Cathedral Prep | 41 |
| 2001 | W | 41 | Muskegon (MI) High | 20 |
| 2002 | W | 23 | Erie (PA) Cathedral Prep | 13 |
| 2002 | W | 63 | Toronto (ON, CAN) De La Salle | 0 |
| 2002 | W | 20 | Muskegon (MI) High | 15 |
| 2003 | W | 13 | Erie (PA) Cathedral Prep | 6 |
| 2003 | W | 37 | Huntington (IN) North | 0 |
| 2004 | W | 52 | Washington (DC) Calvin Coolidge | 0 |
| 2005 | W | 14 | Pittsburgh (PA) Central Catholic | 6 |
| 2005 | W | 49 | Hamilton (ON, CAN) St. Thomas | 0 |
| 2005 | W | 49 | Buffalo (NY) St. Francis | 0 |
| 2006 | W | 49 | Springdale (AR) | 3 |
| 2006 | W | 14 | Hollywood (FL) Chaminade | 7 |
| 2006 | W | 45 | Buffalo (NY) St. Francis | 0 |
| 2007 | W | 14 | Washington (DC) HD Woodson | 0 |
| 2007 | W | 28 | Mansfield (MA) | 17 |
| 2008 | W | 33 | Washington (DC) HD Woodson | 0 |
| 2008 | W | 33 | Erie (PA) Cathedral Prep | 20 |
| 2009 | L | 7 | Inkster (MI) | 14 |
| 2009 | W | 12 | Erie (PA) Cathedral Prep | 8 |
| 2010 | W | 38 | Inkster (MI) | 6 |
| 2011 | W | 47 | Pittsburgh (PA) Penn Hills | 6 |
| 2011 | W | 52 | Tampa (FL) Thomas Jefferson | 13 |
| 2011 | L | 7 | Ramsey (NJ) Don Bosco Prep | 38 |

| YEAR | W / L | St. Ed's | TEAM / SCHOOL | OPP |
|------|-------|----------|------------------------------------|-----|
| 2012 | W | 51 | Washington (DC) HD Woodson | 0 |
| 2012 | W | 34 | Erie (PA) McDowell | 23 |
| 2013 | W | 49 | Washington (DC) HD Woodson | 0 |
| 2013 | W | 56 | Erie (PA) McDowell | 7 |
| 2013 | W | 41 | Eastern Christian Academy (MD) | 40 |
| 2014 | W | 38 | Gilman School (Md) | 7 |
| 2014 | W | 42 | St. Joes Regional (N.J.) | 0 |
| 2014 | L | 10 | Bergen Catholic (N.J.) | 14 |
| 2014 | W | 42 | Canada Prep Academy (On. Can) | 0 |
| 2014 | W | 35 | Eastern Christian Academy (Md.) | 6 |
| 2015 | W | 14 | Gilman (MD) | 13 |
| 2015 | L | 20 | St. Joseph Regional (NJ) | 22 |
| 2015 | W | 31 | Bergen Catholic (NJ) | 28 |
| 2015 | W | 24 | Cocoa (Fla) | 14 |
| 2015 | W | 47 | Mainland (Fla) | 28 |
| 2015 | W | 42 | Canada Prep Academy (On. Can) | 10 |
| 2016 | W | 28 | Pine-Richland (Pa.) | 27 |
| 2016 | W | 35 | Naperville Central (IL.) | 14 |
| 2016 | W | 35 | Canada Prep football Academy | 7 |
| 2017 | W | 40 | Erie (PA) McDowell | 10 |
| 2017 | W | 45 | Washington (DC) HD Woodson | 20 |
| 2017 | W | 34 | Naperville Central (IL) | 24 |
| 2017 | W | 38 | Cathedral (Indiana) | 10 |
| 2017 | W | 31 | Canada Prep Academy | 7 |
| 2018 | L | 20 | Cass Tech (Mi.) | 21 |
| 2018 | W | 35 | Cathedral Prep (Pa.) | 3 |
| 2018 | W | 39 | Cathedral (Indiana) | 14 |
| 2018 | W | 38 | Football North St. Joe's | 7 |
| 2019 | W | 41 | Cass Tech (Mi.) | 20 |
| 2019 | W | 21 | Cathedral Prep (Pa.) | 14 |
| 2019 | W | 48 | Football North Clarkson | 11 |
| 2019 | W | 36 | National Christian Academy (Md.) | 14 |
| 2021 | W | 56 | Rock Creek Christian Academy(Md.) | 18 |
| 2021 | W | 58 | Beacon Hill (Va.) | 0 |
| 2021 | W | 38 | Football North Clarkson | 7 |
| 2022 | W | 42 | Pittsburgh (PA) Central Catholic | 10 |
| 2022 | W | 13 | Cherry Creek (CO) | 9 |
| 2022 | W | 37 | Rock Creek Christian Academy (Md.) | 6 |
| 2022 | W | 35 | Football North-Clarkson | 18 |
| 2023 | W | 27 | Center Grove (Indiana) | 10 |
| 2023 | W | 28 | Our Lady of Good Counsel (Md) | 7 |
| 2023 | W | 42 | Rock Creek Christian Academy (Md.) | 14 |
| 2023 | W | 42 | River Rouge (Mi) | 6 |
| 2023 | W | 35 | Football North (Canada) | 15 |

St. Edward 2023 GAME STATS

| | SEHS | CG |
|--------------------------|------------|---------------|
| 1st Downs | 16 | 15 |
| Total Yards | 286 | 205 |
| Passing: Comp-Att-Int-TD | 10-16-2-0 | 17-24-1-0 |
| Passing Net: Yards | 137 | 149 |
| Rushing: Att-Yds | 35-149 | 30-56 |
| Fumbles / Lost | 1 / 1 | 0 / 0 |
| Sacks | 8 | 0 |
| TFLS | 5 | 1 |
| Penalty - Yards | 5 - 51 | 2 - 17 |
| 3rd Down Conversions | 6 / 10 | 2 / 11 |
| Punts: Nbr-Yds-Long-Avg | 2-74-39-37 | 5-172-43-34.4 |
| Average Drive Start | 32.8 | 31.0 |
| Time of Possession | 20:31 | 27:29 |

| | SEHS | RRHS |
|--------------------------|------------|------------|
| 1st Downs | 13 | 9 |
| Total Yards | 244 | 167 |
| Passing: Comp-Att-Int-TD | 10-17-1-1 | 8-20-1-1 |
| Passing Net: Yards | 118 | 94 |
| Rushing: Att-Yds | 37-126 | 22-73 |
| Fumbles / Lost | 0 / 0 | 2 / 2 |
| Sacks | 0 | 1 |
| TFLS | 2 | 4 |
| Penalty - Yards | 5 - 41 | 4 - 35 |
| 3rd Down Conversions | 6 / 12 | 0 / 8 |
| Punts: Nbr-Yds-Long-Avg | 2-80-42-40 | 3-60-33-20 |
| Average Drive Start | +38.3 | 23.6 |
| Time of Possession | 26:19 | 21:41 |

| | SEHS | OLGC |
|--------------------------|--------------|---------------|
| 1st Downs | 16 | 9 |
| Total Yards | 215 | 127 |
| Passing: Comp-Att-Int-TD | 8-16-2-1 | 3-14-0-0 |
| Passing Net: Yards | 97 | 33 |
| Rushing: Att-Yds | 41-118 | 32-94 |
| Fumbles / Lost | 1 / 0 | 2 / 2 |
| Sacks | 1.5 | 1 |
| TFLS | 3 | 1 |
| Penalty - Yards | 5 - 40 | 6 - 45 |
| 3rd Down Conversions | 5 / 13 | 4 / 11 |
| Punts: Nbr-Yds-Long-Avg | 3-88-44-29.3 | 6-127-40-21.2 |
| Average Drive Start | 42.9 | 30.5 |
| Time of Possession | 29:29 | 18:31 |

| | SEHS | SIHS |
|--------------------------|-------------|---------------|
| 1st Downs | 20 | 6 |
| Total Yards | 405 | 124 |
| Passing: Comp-Att-Int-TD | 12-17-0-3 | 0-6-1-0 |
| Passing Net: Yards | 257 | 0 |
| Rushing: Att-Yds | 31-148 | 32-124 |
| Fumbles / Lost | 0 / 0 | 0 |
| Sacks | 2 | 0 |
| TFLS | 3 | 0 |
| Penalty - Yards | 5 - 45 | 5 - 40 |
| 3rd Down Conversions | 1 / 6 | 2 / 9 |
| Punts: Nbr-Yds-Long-Avg | 3-117-40-39 | 5-188-44-37.6 |
| Average Drive Start | 36.7 | 32.8 |

| | SEHS | RCCA |
|--------------------------|-----------|--------------|
| 1st Downs | 18 | 15 |
| Total Yards | 295 | 298 |
| Passing: Comp-Att-Int-TD | 14-18-2-1 | 16-27-3-2 |
| Passing Net: Yards | 168 | 225 |
| Rushing: Att-Yds | 29-127 | 25-73 |
| Fumbles / Lost | 2 / 1 | 2 / 1 |
| Sacks | 1 | 1 |
| TFLS | 2 | 1 |
| Penalty - Yards | 2 - 16 | 3 - 32 |
| 3rd Down Conversions | 5 / 9 | 5 / 9 |
| Punts: Nbr-Yds-Long-Avg | 0-0-0 | 2-93-47-46.5 |
| Average Drive Start | 25.3 | 32.1 |
| Time of Possession | 19:26 | 28:34 |

| | SEHS | FB North |
|--------------------------|------------|--------------|
| 1st Downs | 19 | 22 |
| Total Yards | 347 | 288 |
| Passing: Comp-Att-Int-TD | 12-18-0-3 | 15-21-1-0 |
| Passing Net: Yards | 183 | 105 |
| Rushing: Att-Yds | 30-164 | 39-183 |
| Fumbles / Lost | 0 / 0 | 4 / 0 |
| Sacks | 4 | 1 |
| TFLS | 3 | 0 |
| Penalty - Yards | 6-44 | 8-70 |
| 3rd Down Conversions | 7 / 9 | 5 / 9 |
| Punts: Nbr-Yds-Long-Avg | 1-35-35-35 | 2-59-36-29.5 |
| Average Drive Start | 36.1 | 26.4 |
| Time of Possession | 19:17 | 28:43 |

| | SEHS | EHS |
|--------------------------|------------|------------|
| 1st Downs | 16 | 20 |
| Total Yards | 422 | 300 |
| Passing: Comp-Att-Int-TD | 11-14-1-1 | 15-22-0-1 |
| Passing Net: Yards | 157 | 111 |
| Rushing: Att-Yds | 35-265 | 35-189 |
| Fumbles / Lost | 2 / 1 | 0 / 0 |
| Sacks | 0 | 1 |
| TFLS | 3 | 0 |
| Penalty - Yards | 10 - 104 | 3 - 40 |
| 3rd Down Conversions | 2 / 8 | 5 / 11 |
| Punts: Nbr-Yds-Long-Avg | 1-29-29-29 | 2-86-49-43 |
| Average Drive Start | 40.9 | 40.7 |
| Time of Possession | 23:48 | 24:12 |

| | SEHS | MHS |
|--------------------------|---------------|--------------|
| 1st Downs | 15 | 15 |
| Total Yards | 220 | 291 |
| Passing: Comp-Att-Int-TD | 13-29-1-2 | 8-11-1-0 |
| Passing Net: Yards | 153 | 48 |
| Rushing: Att-Yds | 31-67 | 45-243 |
| Fumbles / Lost | 1 / 0 | 4 / 2 |
| Sacks / Yds | 1 | 2 |
| TFLs / Yds | 7 | 2 |
| Penalty - Yards | 8 - 85 | 9 - 86 |
| 3rd Down Conversions | 4 / 15 | 3 / 12 |
| Punts: Nbr-Yds-Long-Avg | 6-215-49-35.8 | 3-94-51-31.3 |
| Average Drive Start | 38.0 | 26.8 |
| Time of Possession | 21:26 | 26:34 |



© Patrick Gallagher

ST. EDWARD EAGLES FOOTBALL

28 PLAYOFF APPEARANCES 12 REGIONAL TITLES 12X STATE SEMI-FINALIST

STATE CHAMPS 2010, 2014, 2015, 2018, 2021, 2022

| | SEHS | Opponents |
|-------------------------------------|--------------|--------------|
| Total Games Played | 8 | 8 |
| Games Played at Home Site | 5 | 2 |
| Points Scored | 263 | 113 |
| Points Scored per Game | 32.9 | 14.1 |
| Points 1st Quarter | 77 | 24 |
| Points 2nd Quarter | 72 | 23 |
| Points 3rd Quarter | 62 | 27 |
| Points 4th Quarter | 52 | 39 |
| Points Overtime | 0 | 0 |
| First Downs - Total | 133 | 111 |
| First Downs - Rush / Pass / Penalty | 64 / 52 / 17 | 59 / 37 / 15 |
| First Downs per Game | 16.6 | 13.9 |
| Rushing Attempts | 267 | 255 |
| Net Yards Rushing | 1,160 | 1,068 |
| Yards per Rush | 4.3 | 4.2 |
| Yards Rushing per Game | 145.0 | 133.5 |
| Long Rush | 48 | 42 |
| Rushing Touchdowns | 20 | 10 |
| Rushing Yards after Contact | 754 | 913 |
| Net Yards Passing | 1,279 | 732 |
| Completed - Attempted - Intercepted | 90 - 145 - 9 | 87 - 149 - 8 |
| Completion Percentage | 62.1% | 58.4% |
| Yards per Completion | 14.2 | 8.4 |
| Yards Passing per Game | 159.9 | 91.5 |
| Passing Touchdowns | 12 | 4 |
| Long Pass | 59 | 46 |
| Yards After Catch | 527 | 403 |
| Pass Efficiency Rating | 151.06 | 97.78 |
| Total Offensive Plays | 412 | 404 |
| Total Net Yards | 2,439 | 1,800 |
| Average Gain per Play | 5.9 | 4.5 |
| Average Yards per Game | 304.9 | 225.0 |
| 1st Down Plays: Number / Average | 176 / 5.6 | 177 / 4.4 |
| 2nd Down Plays: Number / Average | 139 / 6.1 | 129 / 4.7 |
| 3rd Down Plays: Number / Average | 82 / 5.7 | 80 / 4.4 |
| 4th Down Plays: Number / Average | 15 / 8.5 | 18 / 3.4 |
| Fumbles - Number/Lost | 8 / 4 | 15 / 7 |
| Turnover Margin (fumbles & INTs) | +2 | -2 |

| | | |
|---|---------------|---------------|
| All Penalties: Number - Yards | 45 - 425 | 38 - 335 |
| Yards Penalized per Game | 53.1 | 41.9 |
| Offensive Penalties: Number - Yards | 27 - 225 | 22 - 166 |
| Defensive Penalties: Number - Yards | 18 - 200 | 16 - 169 |
| Punts: Number - Yards - Long | 18 - 638 - 49 | 28 - 879 - 51 |
| Yards per Punt | 35.4 | 31.4 |
| Punts inside 20 | 8 | 5 |
| Punt Returns: Number - Yards - Long | 12 - 59 - 18 | 3 - 11 - 11 |
| Punt Returns - Average | 4.9 | 3.7 |
| Punt Returns - TDs | 0 | 0 |
| Kick Returns: Number - Yards - Long | 16 - 323 - 79 | 36 - 607 - 73 |
| Kickoff Returns - Average | 20.2 | 16.9 |
| Kickoff Returns - TDs | 1 | 0 |
| Interceptions: Number - Yards - TDs | 8 - 114 - 1 | 9 - 96 - 0 |
| Fumble Recoveries: Number - Yards - TDs | 7 - 57 - 2 | 4 - 0 - 0 |
| Time of Possession - Total | 182:05 | 201:55 |
| Time of Possession per Game | 22:45 | 25:14 |
| Time of Possession - 1st Half | 92:25 | 99:35 |
| Time of Possession - 2nd Half | 89:40 | 102:20 |
| 3rd Downs: Number Converted / Number | 38 / 82 | 26 / 80 |
| 3rd Down Conversion Percentage | 46.3% | 32.5% |
| 4th Downs: Number Converted / Number | 12 / 15 | 6 / 18 |
| 4th Down Conversion Percentage | 80.0% | 33.3% |
| Sacks (by): Number - Yards | 14.5 - (-69) | 5 - (-44) |
| Tackles for Loss (no sacks): Number - Yards | 26.5 - (-33) | 0 - (0) |
| Safeties | 0 | 0 |
| Field Goals: Made - Attempted | 2 - 2 | 3 - 4 |
| Longest Field Goal Made | 30 | 35 |
| Extra Points: Made - Attempted | 35 - 37 | 8 - 9 |
| Red Zone Chances - Scores | 29-27 | 23-16 |
| Red Zone Success Rate | 93.1% | 69.6% |
| Number of Drives | 71 | 77 |
| Average Drive Start | 40.1 | 30.5 |

| Total Offense | Passing Yards | Rushing Yards | Total Yards | Long Play | TDs | INTs | # of Rushes | # of Passes | # of Plays | Yards per Play |
|---------------|---------------|---------------|-------------|-----------|-----------|----------|-------------|-------------|------------|----------------|
| SEHS | 1279 | 1160 | 2439 | 59 | 32 | 9 | 267 | 145 | 412 | 5.9 |

St. Edward Eagles Points Leaders

| # | Name | Rushing TD Points | Receiving TD Points | Field Goal Points | PAT Points | Kick Return TD Points | Punt Return TD Points | INT Return TD Points | Fumble Return TD Points | 2-Point Conv. Points | Total Points |
|----|----------------|-------------------|---------------------|-------------------|------------|-----------------------|-----------------------|----------------------|-------------------------|----------------------|--------------|
| 28 | Brandon White | 36 | 24 | 0 | 0 | 0 | 0 | 0 | 0 | 0 | 60 |
| 90 | Kellen Moyer | 0 | 0 | 6 | 31 | 0 | 0 | 0 | 0 | 0 | 37 |
| 24 | Joshua Groudle | 30 | 0 | 0 | 0 | 0 | 0 | 0 | 0 | 0 | 30 |
| 10 | Brian Sullivan | 0 | 24 | 0 | 0 | 0 | 0 | 0 | 0 | 0 | 24 |
| 22 | Jon Slaper | 12 | 0 | 0 | 0 | 0 | 0 | 6 | 6 | 0 | 24 |
| 1 | Kyan Mason | 6 | 12 | 0 | 0 | 0 | 0 | 0 | 0 | 0 | 18 |
| 33 | Jacob Robinson | 18 | 0 | 0 | 0 | 0 | 0 | 0 | 0 | 0 | 18 |
| 11 | Zack Hackleman | 0 | 12 | 0 | 0 | 0 | 0 | 0 | 0 | 0 | 12 |
| 25 | Eddie Andrews | 0 | 0 | 0 | 0 | 6 | 0 | 0 | 6 | 0 | 12 |
| 6 | Casey Bullock | 6 | 0 | 0 | 0 | 0 | 0 | 0 | 0 | 0 | 6 |
| 12 | Thomas Csanyi | 6 | 0 | 0 | 0 | 0 | 0 | 0 | 0 | 0 | 6 |
| 57 | Troy Regovich | 6 | 0 | 0 | 0 | 0 | 0 | 0 | 0 | 0 | 6 |
| 14 | Dan Tome | 0 | 0 | 0 | 4 | 0 | 0 | 0 | 0 | 0 | 4 |

St. Edward Eagles 2023 Season Record: 7-1

| GAME | DATE | OPPONENT | RESULT | W-L | Passing (#-Yds) | Rushing (#-Yds) | Receiving (#-Yds) | Tackles-Sacks-TFLs |
|------|-------------|---------------------------|-----------|-------|--------------------------|-----------------------|----------------------|------------------------|
| 1 | Sat, Aug 19 | vs Center Grove (Indiana) | W 27 - 10 | 1 - 0 | Casey Bullock: 10-16-138 | Josh Groudle: 13-70 | Kyan Mason: 6-50 | Nate Gregory: 11-0-0.5 |
| 2 | Sun, Aug 27 | vs OLG | W 28 - 7 | 2 - 0 | Casey Bullock: 8-16-97 | Josh Groudle: 12-48 | Zack Hackleman: 2-48 | Jon Slaper: 12-0-0 |
| 3 | Sat, Sep 02 | vs RCCA (Md.) | W 42 - 14 | 3 - 0 | Casey Bullock: 13-17-167 | Joshua Groudle: 9-38 | Kyan Mason: 6-75 | Nate Gregory: 10-0-0.5 |
| 4 | Sat, Sep 09 | @ Elder | W 34 - 33 | 4 - 0 | Casey Bullock: 8-11-129 | Brandon White: 16-144 | Zack Hackleman: 3-36 | Jon Slaper: 17-0-0 |
| 5 | Fri, Sep 15 | @ Massillon | L 13 - 15 | 4 - 1 | Thomas Csanyi: 13-29-157 | Brandon White: 13-42 | Kyan Mason: 6-53 | Nate Gregory: 18-0-1 |
| 6 | Wed, Sep 23 | vs River Rouge (Mi.) | W 42 - 6 | 5 - 1 | Thomas Csanyi: 8-13-104 | Brandon White: 13-64 | Joshua Groudle: 3-21 | Nate Gregory: 8-0-0 |
| 7 | Sat, Sep 30 | vs St. Ignatius | W 42 - 7 | 6 - 1 | Casey Bullock: 12-16-257 | Joshua Groudle: 5-21 | Zack Hackleman: 4-66 | Nate Gregory: 9-0-0.5 |
| 8 | Sat, Oct 07 | vs FB North | W 35 - 15 | 7 - 1 | Casey Bullock: 10-16-145 | Brandon White: 14-86 | Zack Hackleman: 4-86 | Jon Slaper: 17-1-2 |

2023 St. Edward Explosive Plays By Length (20 yds or more)

| Type | Yds | Play | Opponent |
|---------|-----|--------------------------------------|----------------|
| KO Ret | 79 | Eddie Andrews (TD) | RCCA |
| KO Ret | 59 | Kyan Mason | Elder |
| Pass | 59 | Casey Bullock to Brian Sullivan TD | St Ignatius |
| Pass | 58 | Casey Bullock to Zach Hackleman | Center Grove |
| Int Ret | 57 | Jon Slapper (TD) | RCCA |
| FUM Rec | 56 | Jon Slapper (TD) | RCCA |
| Run | 48 | Brandon White | Elder |
| Pass | 43 | Casey Bullock to Brian Sullivan | Elder |
| Pass | 42 | Casey Bullock to Zach Hackleman | St Ignatius |
| KO Ret | 39 | Jon Slapper | Elder |
| Run | 37 | Kyan Mason (TD) | Elder |
| Pass | 36 | Thomas Csanyi to Zack Hackleman | River Rouge |
| Run | 35 | Kyan Mason | St Ignatius |
| Pass | 34 | Casey Bullock to Zach Hackleman | OLGC |
| Pass | 32 | Casey Bullock to Kyan Mason | Center Grove |
| Pass | 32 | Casey Bullock to Brian Sullivan (TD) | RCCA |
| Pass | 32 | Casey Bullock to Kyan Mason (TD) | RCCA |
| Run | 32 | Brandon White | Elder |
| Pass | 31 | Thomas Csanyi to Brandon White (TD) | Massillon |
| Pass | 31 | Brandon White to Zack Hackleman TD | Football North |
| Pass | 31 | Casey Bullock to Kyan Mason | Football North |
| FG | 29 | Kellen Moyer | Elder |
| Pass | 29 | Casey Bullock to Kyan Mason TD | St Ignatius |
| Run | 28 | Brandon White | Elder |
| FG | 27 | Kellen Moyer | Elder |
| Pass | 26 | Thomas Csanyi to Brandon White | River Rouge |

| Type | Yds | Play | Opponent |
|------|-----|--------------------------------------|----------------|
| Pass | 26 | Casey Bullock to Brian Sullivan TD | Football North |
| Pass | 25 | Casey Bullock to Kyan Mason | St Ignatius |
| Pass | 25 | Casey Bullock to Zach Hackleman | Football North |
| Pass | 24 | Casey Bullock to Brian Sullivan (TD) | OLGC |
| Pass | 24 | Casey Bullock to Brandon White | RCCA |
| Run | 24 | Brandon White | Football North |
| Pass | 22 | Casey Bullock to Kyan Mason | Elder |
| Run | 21 | Joshua Groudle (TD) | Center Grove |
| run | 21 | Brandon White | River Rouge |
| Pass | 20 | Casey Bullock to Brandon White TD | St Ignatius |



St. Edward 2023 Individual Statistics

| # | Quarterback | Comp | Att | Yards | Long | Comp % | TDs | INTs | QB Rating |
|---------------|---------------|-----------|------------|--------------|-----------|---------------|-----------|----------|---------------|
| 6 | Casey Bullock | 62 | 93 | 934 | 59 | 66.67% | 8 | 7 | 164.36 |
| 12 | Thomas Csayni | 25 | 47 | 299 | 39 | 53.19% | 3 | 2 | 119.18 |
| 28 | Brandon White | 1 | 1 | 32 | 32 | 100.00% | 1 | 0 | 698.80 |
| 92 | Mason Sak | 2 | 4 | 14 | 9 | 50.00% | 0 | 0 | 79.40 |
| Total Passing | | 90 | 145 | 1,279 | 59 | 62.07% | 12 | 9 | 151.06 |

| # | Running Back | Rushes | Yards | TDs | Long | Yds/Rush |
|-------|-----------------|------------|--------------|-----------|-----------|------------|
| 28 | Brandon White | 77 | 459 | 6 | 48 | 6.0 |
| 24 | Joshua Groudle | 70 | 284 | 5 | 21 | 4.1 |
| 6 | Casey Bullock | 43 | 156 | 1 | 17 | 3.6 |
| 33 | Jacob Robinson | 30 | 146 | 3 | 21 | 4.9 |
| 12 | Thomas Csayni | 17 | 6 | 1 | 19 | 0.4 |
| 1 | Kyan Mason | 12 | 128 | 1 | 37 | 10.7 |
| 22 | Jon Slaper | 5 | 15 | 2 | 7 | 3.0 |
| 34 | Anthony Camargo | 4 | 4 | 0 | 3 | 1.0 |
| 0 | Team | 2 | -40 | 0 | 0 | -20.0 |
| 92 | Mason Sak | 2 | -5 | 0 | 10 | -2.5 |
| 32 | Nate Gregory | 2 | 4 | 0 | 3 | 2.0 |
| 19 | Kaden Robinson | 1 | 2 | 0 | 2 | 2.0 |
| 57 | Troy Regovich | 1 | 1 | 1 | 1 | 1.0 |
| TOTAL | | 267 | 1,160 | 20 | 48 | 4.3 |

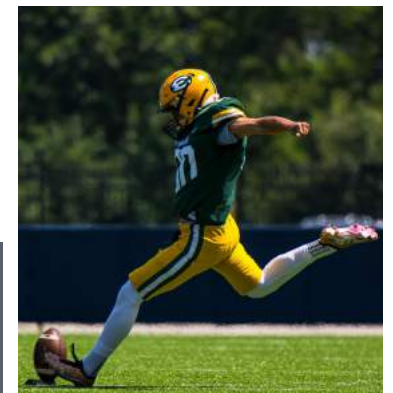
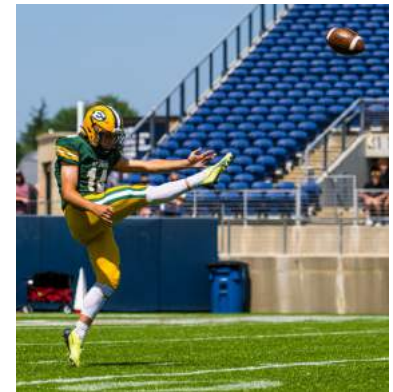
| # | Receiver | Catches | Thrown To | Yards | Long | TDs | Yds/Catch |
|-----------------|---------------------|-----------|------------|--------------|-----------|-----------|-------------|
| 1 | Kyan Mason | 28 | 44 | 314 | 32 | 2 | 11.2 |
| 10 | Brian Sullivan | 21 | 35 | 344 | 59 | 4 | 16.4 |
| 11 | Zack Hackleman | 17 | 25 | 348 | 58 | 2 | 20.5 |
| 28 | Brandon White | 10 | 13 | 164 | 31 | 4 | 16.4 |
| 24 | Joshua Groudle | 5 | 6 | 36 | 9 | 0 | 7.2 |
| 88 | Drew Mahle | 4 | 7 | 22 | 16 | 0 | 5.5 |
| 13 | Luke Hess | 2 | 4 | 19 | 14 | 0 | 9.5 |
| 81 | Michael Balogh | 1 | 1 | 14 | 14 | 0 | 14.0 |
| 4 | Caleb Heckel | 1 | 3 | 12 | 12 | 0 | 12.0 |
| 16 | Peter Glovna | 1 | 1 | 6 | 6 | 0 | 6.0 |
| 0 | Team | 0 | 5 | | | | |
| 5 | Rashee McLaurin Jr. | 0 | 1 | | | | |
| Total Receiving | | 90 | 145 | 1,279 | 59 | 12 | 14.2 |

| # | Kickers | FG Made | FG Att | Long | XP Made | XP Att. | Kickoffs | Yards | Average | T-backs |
|-------|--------------|----------|----------|-----------|-----------|-----------|-----------|-------------|-------------|----------|
| 90 | Kellen Moyer | 2 | 2 | 30 | 31 | 33 | 35 | 1618 | 46.2 | 8 |
| 14 | Dan Tome | | 0 | | 4 | 4 | 9 | 395 | 43.9 | 0 |
| 91 | P.J. Barkley | | 0 | | | 0 | 3 | 132 | 44.0 | 1 |
| Total | | 2 | 2 | 30 | 35 | 37 | 47 | 2145 | 45.6 | 9 |

| # | Punters | Punts | Yards | Average Long | In 20 | Caught | Downed | T-backs |
|-------|---------------|-----------|------------|--------------|-----------|----------|----------|----------|
| 14 | Dan Tome | 17 | 600 | 35.3 | 49 | 7 | 6 | 1 |
| 12 | Thomas Csanyi | 1 | 38 | 38.0 | 38 | 1 | 0 | 0 |
| Total | | 18 | 638 | 35.4 | 49 | 8 | 6 | 1 |

| # | Kick Returner | Kick Returns | Yards | Average | Long | TDs | Yds A/P |
|-------|----------------|--------------|------------|-------------|-----------|----------|-------------|
| 1 | Kyan Mason | 5 | 125 | 25.0 | 59 | 0 | 619 |
| 22 | Jon Slaper | 3 | 78 | 26.0 | 39 | 0 | 204 |
| 28 | Brandon White | 2 | 23 | 11.5 | 22 | 0 | 656 |
| 88 | Drew Mahle | 2 | 18 | 9.0 | 12 | 0 | 40 |
| 0 | Team | 2 | 0 | 0.0 | 0 | 0 | -40 |
| 25 | Eddie Andrews | 1 | 79 | 79.0 | 79 | 1 | 81 |
| 10 | Brian Sullivan | 1 | 0 | 0.0 | 0 | 0 | 344 |
| Total | | 16 | 323 | 20.2 | 79 | 1 | 2992 |

| # | Punt Returner | Punt | Returns | Yards | Average | Long | TDs | Yards All Purpose |
|-------|---------------|------|-----------|-----------|------------|-----------|----------|-------------------|
| 1 | Kyan Mason | | 7 | 52 | 7.4 | 18 | 0 | 619 |
| 0 | Team | | 2 | 0 | 0.0 | 0 | 0 | -40 |
| 28 | Brandon White | | 1 | 10 | 10.0 | 10 | 0 | 656 |
| 57 | Troy Regovich | | 1 | 0 | 0.0 | 0 | 0 | 1 |
| 9 | Loghan Thomas | | 1 | -3 | -3.0 | 0 | 0 | -3 |
| Total | | | 12 | 59 | 4.9 | 18 | 0 | 2992 |



St. Edward Eagles

DEFENSE

| Sack | | TFL | TFL | SOLO | Tackle | Total | Tackles* | QB | Pass | Caused | Fum | Fum | Yards F'ble | INT | INT | Punt/FG |
|-------|---------------------|-------|-------|---------|---------|----------|----------|---------|---------|---------|-----|--------|-------------|-----|-----|---------|
| Sacks | Yards | Yards | Yards | Tackles | Assists | Tackles | Hurries* | Hurries | Breakup | Fumbles | Rec | ret | ret. | TDs | INT | INT |
| 0 | -69 | 41 | -102 | 236 | 428 | 664 | 40 | 13 | 14 | 7 | 57 | 2 | 8 | 114 | 1 | 3 |
| Sack | | TFL | TFL | SOLO | Tackle | Total | QB | Pass | Caused | Fum | FUM | FUM | ret. | TDs | INT | INT |
| Sacks | Yards | Yards | Yards | Tackles | Assists | Tackles* | Hurries* | Hurries | Breakup | Fumbles | Rec | return | ret. | TDs | INT | INT |
| 22 | Jon Slaper | 1 | -6 | 5.5 | -16 | 26 | 66 | 92 | 2 | 2 | 0 | 2 | 54 | 1 | 1 | 57 |
| 32 | Nate Gregory | 1 | 0 | 4.5 | -2.5 | 25 | 55 | 80 | 5 | 0 | 2 | 0 | 0 | 0 | 0 | 0 |
| 43 | Bradley Eaton | 1 | 0 | 1 | 0 | 33 | 42 | 75 | 3 | 1 | 0 | 1 | 1 | 0 | 1 | 21 |
| 7 | Xavier Styles | 0 | 0 | 0.5 | 0 | 26 | 30 | 56 | 1 | 1 | 0 | 1 | 0 | 0 | 1 | 0 |
| 9 | Lohan Thomas | 5.5 | -33 | 14.5 | -37.5 | 20 | 35 | 55 | 14 | 2 | 4 | 0 | 0 | 0 | 0 | 0 |
| 54 | Jaden Woods | 0 | 0 | 2 | 0 | 6 | 33 | 39 | 0 | 0 | 1 | 0 | 0 | 0 | 0 | 0 |
| 35 | Behlen Waugh | 0 | 0 | 0 | 0 | 10 | 23 | 33 | 0 | 0 | 1 | 0 | 0 | 0 | 1 | 0 |
| 57 | Troy Regovich | 0 | 0 | 2.5 | -1.5 | 4 | 28 | 32 | 2 | 1 | 1 | 0 | 0 | 0 | 0 | 0 |
| 17 | Joshua Hayden | 0 | 0 | 0.5 | -1.5 | 16 | 13 | 29 | 0 | 2 | 1 | 0 | 0 | 0 | 0 | 0 |
| 25 | Eddie Andrews | 1 | -5 | 1.5 | -5 | 21 | 1 | 22 | 3 | 0 | 2 | 2 | 1 | 0 | 0 | 1 |
| 47 | Padraig McMahon | 1 | -9 | 1.5 | -9 | 5 | 13 | 18 | 1 | 0 | 0 | 0 | 0 | 0 | 0 | 0 |
| 58 | Alec Dabney | 0 | 0 | 1 | -2 | 3 | 14 | 17 | 5 | 0 | 0 | 0 | 0 | 0 | 0 | 0 |
| 20 | Aydin Buchanan | 0 | 0 | 0 | 0 | 7 | 8 | 15 | 1 | 1 | 0 | 0 | 0 | 0 | 1 | 0 |
| 45 | Joseph Tipka | 1 | -5 | 1 | -5 | 3 | 12 | 15 | 0 | 0 | 0 | 0 | 0 | 0 | 0 | 0 |
| 38 | Yon German | 0 | 0 | 0 | 0 | 2 | 12 | 14 | 0 | 0 | 0 | 0 | 0 | 0 | 0 | 0 |
| 2 | Camrin Boone | 0 | 0 | 1 | -8 | 9 | 4 | 13 | 1 | 3 | 0 | 0 | 0 | 0 | 1 | 36 |
| 42 | Raymond Webber | 1.5 | -6 | 1.5 | -6 | 2 | 6 | 8 | 0 | 0 | 0 | 0 | 0 | 0 | 0 | 0 |
| 3 | Tayvin Shaw | 0 | 0 | 0 | 0 | 3 | 3 | 6 | 0 | 0 | 0 | 0 | 0 | 0 | 2 | 0 |
| 99 | Raymond Jenne | 0 | 0 | 0 | 0 | 2 | 4 | 6 | 0 | 0 | 0 | 0 | 0 | 0 | 0 | 0 |
| 37 | Owen Sanderson | 0.5 | -5 | 0.5 | -5 | 1 | 5 | 6 | 1 | 0 | 0 | 0 | 0 | 0 | 0 | 0 |
| 51 | Cade Driscoll | 1 | 0 | 1 | 0 | 2 | 3 | 5 | 0 | 0 | 0 | 0 | 0 | 0 | 0 | 0 |
| 98 | Edward Tutak | 0 | 0 | 0 | 0 | 0 | 4 | 4 | 0 | 0 | 0 | 0 | 0 | 0 | 0 | 0 |
| 40 | Jamal Seder | 0 | 0 | 0 | 0 | 3 | 0 | 3 | 0 | 0 | 0 | 0 | 0 | 0 | 0 | 0 |
| 39 | Colton Fee | 0 | 0 | 0 | 0 | 1 | 2 | 3 | 0 | 0 | 0 | 0 | 0 | 0 | 0 | 0 |
| 49 | Brayden Thomas | 0 | 0 | 0 | 0 | 1 | 2 | 3 | 0 | 0 | 0 | 0 | 0 | 0 | 0 | 0 |
| 93 | Will Fowler | 0 | 0 | 0 | 0 | 0 | 3 | 3 | 1 | 0 | 0 | 0 | 0 | 0 | 0 | 0 |
| 92 | Mason Sak | 0 | 0 | 0 | 0 | 0 | 2 | 2 | 0 | 0 | 0 | 0 | 0 | 0 | 0 | 0 |
| 0 | Team | 0 | 0 | 1 | -3 | 1 | 0 | 1 | 0 | 0 | 3 | 0 | 0 | 0 | 0 | 0 |
| 10 | Brian Sullivan | 0 | 0 | 0 | 0 | 1 | 0 | 1 | 0 | 0 | 0 | 0 | 0 | 0 | 0 | 0 |
| 31 | Triston Addison | 0 | 0 | 0 | 0 | 1 | 0 | 1 | 0 | 0 | 0 | 0 | 0 | 0 | 0 | 0 |
| 36 | Nicholas Variglotti | 0 | 0 | 0 | 0 | 1 | 0 | 1 | 0 | 0 | 0 | 0 | 0 | 0 | 0 | 0 |
| 81 | Michael Balogh | 0 | 0 | 0 | 0 | 1 | 0 | 1 | 0 | 0 | 0 | 0 | 0 | 0 | 0 | 0 |
| 21 | Jamier Hopkins | 0 | 0 | 0 | 0 | 0 | 1 | 1 | 0 | 0 | 0 | 0 | 0 | 0 | 0 | 0 |
| 30 | Christopher Cuccia | 0 | 0 | 0 | 0 | 0 | 1 | 1 | 0 | 0 | 0 | 0 | 0 | 0 | 0 | 0 |
| 34 | Anthony Camargo | 0 | 0 | 0 | 0 | 0 | 1 | 1 | 0 | 0 | 0 | 0 | 0 | 0 | 0 | 0 |
| 53 | Name? | 0 | 0 | 0 | 0 | 0 | 1 | 1 | 0 | 0 | 0 | 0 | 0 | 0 | 0 | 0 |
| 80 | Quinn Kelley | 0 | 0 | 0 | 0 | 0 | 1 | 1 | 0 | 0 | 0 | 0 | 0 | 0 | 0 | 0 |
| 8 | Chayce Brown | 0 | 0 | 0 | 0 | 0 | 0 | 0 | 0 | 1 | 0 | 0 | 0 | 0 | 0 | 0 |
| 29 | Name? | 0 | 0 | 0 | 0 | 0 | 0 | 0 | 0 | 0 | 1 | 0 | 0 | 0 | 0 | 0 |

2023 SEASON GAME SUPERLATIVES

Individual SEHS Records

| OFFENSE | | | | PASSING | | | |
|-----------|---------------------|------|--|----------------------------|-------|--|--|
| Rushing | Yards | 144 | Brandon White, @Elder | Yards | 257 | Casey Bullock, St. Ignatius | |
| | Attempts | 16 | Brandon White, @Elder | Attempts | 29 | Thomas Csanyi, @Massillon | |
| | Yds/Att. (10+ att.) | 9.0 | Brandon White, @Elder | Completions | 13 | Thomas Csanyi, @Massillon; Casey Bullock, RCCA (Md.) | |
| Receiving | TDs | 2 | Jon Slaper, St. Ignatius; Joshua Groudle, v.Center Grove (Indiana) | Yds/Att (10+ att.) | 16.1 | Casey Bullock, St. Ignatius | |
| | Yards | 86 | Zack Hackleman, Football North (Canada) | Intercepted | 2 | Many | |
| | Catches | 6 | Kyan Mason, RCCA(Md.), v.Center Grove (Indiana) | Comp.% (20+ att.) | 44.8% | Thomas Csanyi, @Massillon | |
| Scoring | Yds/Catch (5+) | 12.6 | Brian Sullivan, @Massillon | TDs | 3 | Casey Bullock, St. Ignatius | |
| | TDs | 2 | Zack Hackleman, Fb North | QB Rating (10+ att.) | 272 | Casey Bullock, St. Ignatius | |
| | Points | 12 | Many | Total Offense Yards | 257 | Casey Bullock, St. Ignatius | |
| Kicking | TDs | 2 | Many | All-Purpose Yards | 177 | Brandon White, @Elder | |
| | Kicking points | 7 | Kellen Moyer, @Elder | | | | |

SPECIAL TEAMS

| Punts | | | | Kickoff Rtns | | | |
|-----------|-------------------|-----|--------------------------------------|-------------------|-----------|---------------------------|----------------------------|
| Punts | Number | 6 | Dan Tome, @Massillon | Number | 2 | Kyan Mason, OLGC | |
| | Yards | 215 | Dan Tome, @Massillon | Yards | 79 | Eddie Andrews, RCCA (Md.) | |
| | Avg Yards (5+) | 36 | Dan Tome, @Massillon | Yards/Return (2+) | 38 | Kyan Mason, @Elder | |
| Punt Rtns | Number | 4 | Kyan Mason, v.Center Grove (Indiana) | Extra Pts | Made | 6 | Kellen Moyer, St. Ignatius |
| | Yards | 36 | Kyan Mason, v.Center Grove (Indiana) | | Attempted | 6 | Kellen Moyer, St. Ignatius |
| | Yards/Return (2+) | 9 | Kyan Mason, v.Center Grove (Indiana) | Field Goals | Made | 2 | Kellen Moyer, @Elder |
| | | | | Attempted | 2 | Kellen Moyer, @Elder | |

LONGEST PLAYS

| SEHS | | Opponents | |
|----------------|---|----------------|---|
| Rush | 48 yds - Brandon white @ Elder | Rush | 42 yds - Daone Owens, @Massillon |
| Pass | 59 yds - Casey Bullock, St. Ignatius | Pass | 46 yds - Kash Carter, Rock Creek Christian Academy (Md.) |
| Reception | 59 yds - Brian Sullivan, St. Ignatius | Reception | 46 yds - Zayveon Prince, Rock Creek Christian Academy (Md.) |
| Field Goal | 30 yds—Kellen Moyer @ Elder | Field Goal | 35 yds - Joey Roth, @Elder |
| Punt | 49 yds - Dan Tome, Massillon | Punt | 51 yds - Tyler Hackenbracht, @Massillon |
| Punt Return | 18 yds - Kyan Mason, v.Center Grove (Indiana) | Punt Return | 11 yds - Tyler Hackenbracht, @Massillon |
| Kickoff Return | 79 yds - Eddie Andrews RCCA (Md) | Kickoff Return | 73 yds - Matt Ritt, St Ignatius |

DEFENSE

| Tackles | | | | Fumbles | | | |
|--------------|----------------|----|--|---------|--------|--|------|
| Tackles | Total | 18 | Nate Gregory, @Massillon | Caused | 2 | Loghan Thomas, @Massillon | |
| | Solo Tackles | 9 | Bradley Eaton, @Elder | Yards | 56 | Jon Slaper, RCCA (Md.) | |
| | Assist Tackles | 12 | Jon Slaper, Clarkson Football North (Canada); Nate Gregory, @Massillon | TD | 1 | Jon Slaper, RCCA(Md.); Eddie Andrews, OLGC | |
| Tkl for Loss | Number | 3 | Loghan Thomas, @Massillon, @Elder | Int | Number | 1 | Many |
| | Yards | 20 | Loghan Thomas, Clarkson Football North | Yards | 57 | Jon Slaper, RCCA (Md.) | |
| QB Sacks | Number | 2 | Loghan Thomas, Clarkson Football North | TD | 1 | Jon Slaper, RCCA (Md.) | |
| | Yards | 18 | Loghan Thomas, Clarkson Football North | | | | |

2023 SEASON GAME SUPERLATIVES - page 2

TEAM RECORDS

SEHS OFFENSE

| | | | | | | | |
|----------------------|-------------------|-----|--------------------------------|-------------|--------------|-----|------------------------------------|
| Rushing | Attempts | 41 | Our Lady of Good Counsel (Md.) | Scoring | Points | 42 | RCCA (Md) |
| | Yards | 265 | @Elder | | TD | 6 | RCCA (Md) |
| | Yards/Attempt | 7.8 | @Elder | | Extra Points | 6 | RCCA (Md) |
| Passing | Attempts | 29 | @Massillon | First Downs | Total | 20 | St. Ignatius |
| | Completions | 13 | RCCA (Md.) | | Rushing | 11 | RCCA (Md) |
| | Yards | 257 | St. Ignatius | | Passing | 11 | St. Ignatius |
| | % (15+ comp.) | N/A | | | Penalty | 5 | @Massillon |
| | Intercepted | 2 | Many | Fumbles | Lost | 2 | @Elder |
| | Yds/Att (15+comp) | N/A | | Penalties | Most | 9 | @Elder |
| Total Offense | Plays | 57 | Our Lady of Good Counsel (Md.) | | Least | 2 | Rock Creek Christian Academy (Md.) |
| | Yards | 426 | @Elder | Yards | Most | 103 | @Elder |
| | Yards/Play | 8.9 | @Elder | | Least | 16 | RCCA (Md.) |

SEHS SPECIAL TEAMS

| | | | | | | | |
|---------------------|-------------------|------|--------------------------|--------------|----------------|------|--------|
| Punts | Number | 6 | @Massillon | Kickoff Rtns | Number | 5 | @Elder |
| | Yards | 215 | @Massillon | | Yards | 143 | @Elder |
| | Avg. Yards (5+) | 35.8 | @Massillon | | Yards/Rtn (3+) | 28.6 | @Elder |
| Punt Returns | Number | 5 | v.Center Grove (Indiana) | | | | |
| | Yards | 36 | v.Center Grove (Indiana) | | | | |
| | Yards/Return (3+) | 7.2 | v.Center Grove (Indiana) | | | | |

OPPONENTS

| | | | | | | | |
|----------------------|---------|-------|--------------------------------|-------------|-------|-----|--------------------------------|
| Rush Attempts | Least | 22 | River Rouge (Mi.) | Total Plays | Least | 38 | St. Ignatius |
| | Most | 45 | @Massillon | | Most | 60 | Clarkson Football North |
| Yards | Least | 68 | River Rouge (Mi.) | Yards | Least | 124 | St. Ignatius |
| | Most | 243 | @Massillon | | Most | 300 | @Elder |
| Yds/Carry | Least | 2.8 | Our Lady of Good Counsel (Md.) | Yards/Att. | Least | 2.6 | Our Lady of Good Counsel (Md.) |
| | Most | 5.4 | @Elder | | Most | 5.7 | RCCA (Md.) |
| Pass Attempts | Least | 6 | St. Ignatius | First Downs | Least | 6 | St. Ignatius |
| | Most | 29 | v.Center Grove (Indiana) | | Most | 22 | Clarkson Football North |
| Completions | Least | 3 | Our Lady of Good Counsel (Md.) | | | | |
| | Most | 22 | v.Center Grove (Indiana) | | | | |
| Completion % | Lowest | 21.4% | Our Lady of Good Counsel (Md.) | | | | |
| | Highest | 75.9% | v.Center Grove (Indiana) | | | | |
| Yards | Least | 33 | Our Lady of Good Counsel (Md.) | | | | |
| | Most | 216 | RCCA (Md.) | | | | |

SEHS DEFENSE

| | | | | | | | |
|----------------|----------------|----|--------------------------|------------------|----------------------|----|------------------------------------|
| Tackles | For Loss | 10 | v.Center Grove (Indiana) | Turnovers | Fumbles Recovered | 2 | Our Lady of Good Counsel (Md.) |
| | For Loss Yards | 45 | v.Center Grove (Indiana) | | Fumble Return Yds | 56 | Rock Creek Christian Academy (Md.) |
| | Sacks | 5 | v.Center Grove (Indiana) | | Interceptions | 3 | Rock Creek Christian Academy (Md.) |
| | Sack Yards | 33 | v.Center Grove (Indiana) | | Interception Rtn Yds | 57 | Rock Creek Christian Academy (Md.) |

2023 VARSITY FOOTBALL ROSTER

ST. EDWARD HIGH SCHOOL



| # | Name | | Ht. | Wt. | Pos. | Class |
|----|-------------|--------------|------|-----|-------|-------|
| 1 | Kyan | Mason | 5'8 | 155 | WR | 2024 |
| 2 | Camrin | Boone | 6'0 | 175 | DB | 2024 |
| 3 | Tayvin | Shaw | 6'0 | 160 | DB | 2024 |
| 4 | Caleb | Heckel | 6'2 | 210 | WR/TE | 2024 |
| 5 | Rashee | McLaurin Jr. | 6'0 | 177 | WR | 2024 |
| 6 | Casey | Bullock | 6'1 | 205 | QB | 2024 |
| 7 | Xavier | Styles | 6'1 | 190 | DB | 2024 |
| 8 | Zach | Hackleman | 6'1 | 170 | WR | 2026 |
| 9 | Loghan | Thomas | 6'4 | 210 | DL | 2024 |
| 10 | Brian | Sullivan | 6'1 | 175 | WR | 2024 |
| 11 | Chayce | Brown | 5'9 | 190 | LB | 2024 |
| 11 | Mason | Sak | 6'0 | 175 | QB | 2025 |
| 12 | Thomas | Csanyi | 6'2 | 180 | QB | 2025 |
| 13 | Luke | Hess | 6'0 | 165 | WR | 2025 |
| 14 | Dan | Tome | 5'9 | 170 | K | 2024 |
| 15 | Julian | Hauck | 6'0 | 170 | TE | 2024 |
| 16 | Peter | Glovna | 6'0 | 155 | WR | 2024 |
| 17 | Joshua | Hayden | 6'0 | 183 | DB | 2024 |
| 18 | Chris | Attia | 6'0 | 160 | DB | 2024 |
| 19 | Kaden | Robinson | 5'10 | 185 | DB | 2025 |
| 20 | Aydin | Buchanan | 5'11 | 190 | DB | 2025 |
| 21 | Jamier | Hopkins | 5'7 | 150 | DB | 2024 |
| 22 | Jon | Slaper | 6'0 | 210 | LB | 2024 |
| 23 | Dominic | Florio, Jr. | 6'0 | 170 | WR | 2024 |
| 24 | Joshua | Groudle | 5'11 | 200 | RB | 2024 |
| 25 | Eddie | Andrews | 6'0 | 190 | DB | 2024 |
| 27 | Cameron | Nails | 5'9 | 210 | WR | 2024 |
| 28 | Brandon | White | 5'8 | 175 | RB | 2026 |
| 29 | Brayden | Thomas | 6'0 | 160 | DB | 2026 |
| 30 | Christopher | Cuccia | 5'7 | 155 | DB | 2024 |
| 31 | Triston | Addison | 5'8 | 165 | DB | 2025 |
| 32 | Nate | Gregory | 6'0 | 230 | LB | 2025 |
| 33 | Jacob | Robinson | 5'8 | 185 | RB | 2024 |
| 34 | Anthony | Camargo | 5'9 | 185 | RB | 2025 |
| 35 | Behlen | Waugh | 6'0 | 217 | LB | 2025 |
| 36 | Nicholas | Variglotti | 5'10 | 145 | DB | 2025 |
| 37 | Owen | Sanderson | 6'5 | 215 | DL | 2024 |
| 38 | Yon | German | 5'11 | 217 | LB | 2025 |
| 39 | Colton | Fee | 6'0 | 225 | DL | 2025 |
| 40 | Jamal | Seder | 5'11 | 170 | DB | 2025 |
| 41 | Enzo | Fourman | 5'10 | 150 | DB | 2025 |

| # | Name | | Ht. | Wt. | Pos. | Class |
|----|----------|------------|------|-----|-------|-------|
| 42 | Raymond | Webber | 6'1 | 250 | DL | 2024 |
| 43 | Bradley | Eaton | 5'9 | 170 | DB | 2025 |
| 44 | Hunter | Elliott | 5'11 | 180 | LB | 2025 |
| 45 | Joseph | Tipka | 6'0 | 215 | DL | 2024 |
| 46 | Joseph | Nemeth | 5'9 | 200 | TE | 2025 |
| 47 | Padraig | McMahon | 6'0 | 220 | LB | 2024 |
| 49 | Brodon | Moore | 5'9 | 157 | DB | 2026 |
| 50 | Thomas | Graham | 5'10 | 200 | OL | 2025 |
| 51 | Cade | Driscoll | 5'11 | 195 | LB | 2024 |
| 52 | Matthew | Daugherty | 5'8 | 230 | OL | 2024 |
| 53 | Kirollos | Youssef | 6'0 | 210 | DL | 2025 |
| 54 | Jaden | Woods | 6'0 | 285 | OL/DL | 2025 |
| 56 | Javeon | Golston | 5'9 | 245 | DL | 2024 |
| 57 | Troy | Regovich | 6'5 | 255 | DL | 2024 |
| 58 | Alec | Dabney | 6'0 | 210 | DL | 2025 |
| 59 | Ryan | Quinn | 5'11 | 196 | DB | 2025 |
| 62 | Anthony | Schuessler | 5'7 | 250 | OL | 2024 |
| 64 | Ben | Gorman | 6'3 | 200 | OL | 2025 |
| 65 | Idris | Cozart | 5'10 | 220 | DL | 2024 |
| 67 | Mason | Wilhelm | 6'3 | 250 | OL/DL | 2026 |
| 69 | John | Waters | 6'1 | 225 | OL | 2024 |
| 71 | Devontae | Armstrong | 6'5 | 305 | OL | 2024 |
| 74 | Archer | Soltis | 6'2 | 305 | OL | 2025 |
| 75 | Sawyer | Prementine | 6'3 | 270 | OL | 2025 |
| 76 | Ben | Roebuck | 6'8 | 320 | OL | 2024 |
| 79 | Deontae | Armstrong | 6'7 | 295 | OL | 2024 |
| 80 | Quinn | Kelley | 6'2 | 150 | WR | 2025 |
| 81 | Michael | Balogh | 6'4 | 235 | TE | 2024 |
| 82 | Brendan | Kearns | 6'1 | 175 | WR | 2024 |
| 83 | Aaron | Stasko | 5'9 | 150 | WR | 2025 |
| 84 | Luke | Vislosky | 6'3 | 195 | WR | 2025 |
| 85 | James | Conway | 5'8 | 135 | WR | 2025 |
| 88 | Drew | Mahle | 6'3 | 210 | TE | 2024 |
| 89 | Daoud | Asleh | 6'2 | 155 | WR | 2025 |
| 90 | Kellen | Moyer | 5'11 | 165 | K | 2025 |
| 91 | P.J. | Barkley | 6'2 | 187 | K | 2025 |
| 93 | Will | Fowler | 6'3 | 325 | DL | 2025 |
| 95 | Savion | Holman | 6'0 | 325 | DL | 2024 |
| 98 | Edward | Tutak | 6'1 | 260 | DL | 2025 |
| 99 | Raymond | Jenne | 5'9 | 240 | DL | 2025 |

Head Coach: Tom Lombardo

Defensive Coordinator: Pete Pappas | **Assistant Coaches:** Tom Becks '77, Bob Conroy, Dan Corcoran '07, Dillon Franciscus '19, T.J. Gallagher '06, Ben Lavisky '20, Bill Rockwell, Dan Scanlon '95, Brad Staples '10, Norm Stickney, Adam Williams '14

Director of Strength and Conditioning: Auggie Promersberger | **Assistant Strength Coach:** Derek Dernier

Equipment Manager: Liam McIlwee '21 | **Student Managers:** Nathan Andrist, Marcus Gonzalez, Michael Hartranft, Cooper Meneghetti, Scottie O'Neil

Athletic Trainer: Brian Warner

St. Edward High School

President: KC McKenna '00

Principal: Matt Stepnowsky

Athletic Director: Pete Kahler '02

Associate Athletic Director: Nicole Pieffer-Barker

Band Director: Kyle Burr

2023 ST. EDWARD VARSITY FOOTBALL TWO DEEP

OFFENSE

DEFENSE

| | | | | | | | | | | | | | |
|----|----|----------|--------------|------|-----|------|----|----|---------|-----------|------|-----|------|
| QB | 6 | Casey | Bullock | 6'1 | 205 | 2024 | DE | 9 | Loghan | Thomas | 6'4 | 210 | 2024 |
| | 12 | Thomas | Csanyi | 6'2 | 180 | 2025 | | 58 | Alec | Dabney | 6'0 | 210 | 2025 |
| RB | 28 | Brandon | White | 5'8 | 175 | 2026 | DT | 54 | Jaden | Woods | 6'0 | 285 | 2025 |
| | 24 | Joshua | Groudle | 5'11 | 200 | 2024 | | 99 | Ray | Jenne | 5'9 | 240 | 2025 |
| | 33 | Jacob | Robinson | 5'8 | 185 | 2024 | | 45 | Joseph | Tipka | 6'0 | 215 | 2024 |
| WR | 10 | Brian | Sullivan | 6'1 | 175 | 2024 | DT | 57 | Troy | Regovich | 6'5 | 255 | 2024 |
| | 5 | Rashee | McLaurin Jr. | 6'0 | 177 | 2024 | | 93 | Will | Fowler | 6'3 | 325 | 2025 |
| WR | 11 | Zach | Hackleman | 6'0 | 162 | 2026 | DE | 47 | Padraig | McMahon | 6'0 | 220 | 2024 |
| | 4 | Caleb | Heckel | 6'2 | 210 | 2025 | | 37 | Owen | Sanderson | 6'5 | 215 | |
| WR | 1 | Kyan | Mason | 5'8 | 155 | 2024 | LB | 22 | Jon | Slaper | 6'0 | 210 | 2024 |
| | 13 | Luke | Hess | 6'0 | 165 | 2025 | | 38 | Yon | German | 5'11 | 217 | 2025 |
| Y | 81 | Michael | Balogh | 6'4 | 235 | 2024 | LB | 32 | Nate | Gregory | 6'0 | 230 | 2025 |
| | 88 | Drew | Mahle | 6'3 | 210 | 2024 | | 35 | Behlen | Waugh | 6'0 | 217 | 2025 |
| LT | 79 | Deontae | Armstrong | 6'7 | 295 | 2024 | S | 7 | Xavier | Styles | 6'1 | 190 | 2024 |
| | 67 | Mason | Wilhelm | 6'3 | 250 | 2026 | | 49 | Brayden | Thomas | | | |
| LG | 71 | Devontae | Armstrong | 6'5 | 305 | 2024 | S | 43 | Bradley | Eaton | 5'9 | 170 | 2025 |
| | 54 | Jaden | Woods | 6'0 | 285 | 2025 | | 20 | Aydin | Buchanan | 5'11 | 190 | 2025 |
| C | 74 | Archer | Soltis | 6'2 | 305 | 2025 | S | 25 | Eddie | Andrews | 6'0 | 190 | 2024 |
| | 76 | Ben | Roebuck | 6'8 | 320 | 2024 | | 17 | Joshua | Hayden | 6'0 | 183 | 2024 |
| RG | 75 | Sawyer | Prementine | 6'3 | 270 | 2025 | CB | 2 | Camrin | Boone | 6'0 | 175 | 2024 |
| | 54 | Jaden | Woods | 6'0 | 285 | 2025 | | 3 | Tayvin | Shaw | 6'0 | 160 | 2024 |
| RT | 76 | Ben | Roebuck | 6'8 | 320 | 2024 | CB | 17 | Joshua | Hayden | 6'0 | 183 | 2024 |
| | 67 | Mason | Wilhelm | 6'3 | 250 | 2026 | | 3 | Tayvin | Shaw | 6'0 | 160 | 2024 |

SPECIAL TEAMS

| | | | | | | |
|-------|----|---------|-------------|------|-----|------|
| K | 90 | Kellen | Moyer | 5'11 | 165 | 2025 |
| | 14 | Dan | Tome | 5'9 | 170 | 2024 |
| P | 14 | Dan | Tome | 5'9 | 170 | 2024 |
| | 43 | Bradley | Eaton | 5'9 | 170 | 2025 |
| LS/FG | 39 | Colton | Fee | 6'0 | 225 | 2025 |
| LS/P | 9 | Loghan | Thomas | 6'4 | 210 | 2024 |
| H | 23 | Dominic | Florio, Jr. | 6'0 | 170 | 2024 |
| | 14 | Dan | Tome | 5'9 | 170 | 2024 |
| PR | 1 | Kyan | Mason | 5'8 | 155 | 2024 |
| | 28 | Brandon | White | 5'8 | 175 | 2026 |
| KR | 1 | Kyan | Mason | 5'8 | 155 | 2024 |
| | 26 | Eddie | Andrews | 6'0 | 190 | 2024 |
| | 28 | Brandon | White | 5'8 | 175 | 2026 |

Pronunciations

| | | | |
|----|----------------------------|----|------------------------|
| 1 | Kai-yan Mason | 57 | Trey Re-go-vich |
| 3 | Tay-vin Shaw | 60 | Ki-roll-yus You-seff |
| 12 | Thomas Chaney | 62 | Anthony Shoe-sler |
| 15 | Zack Hack-el-man | 75 | Sawyer Preh-min-tine |
| 16 | Peter Glove-nah | 81 | Michael Bay-low |
| 24 | Josh Grow-del (like Growl) | | Luke Vis-lau-sky |
| 30 | Chris Coo-Chee-ah | 84 | (lau- rhymes with now) |
| 35 | Bey-lin Wah | 88 | Drew May-lee |
| 36 | Nick Va-rih-glotti | 89 | Dowd As-lay |
| 45 | Joe Tip-kah | 98 | Ed Too-tak |
| 46 | Joe Neh-mith | 99 | Raymond Jenny |
| 49 | Bro-done Moore | | |
| 56 | Javeon Gohl-ston | | |

2023 Archbishop Moeller Crusaders Athletics Football Overall Statistics (as of Oct 8, 2023)

| Team Statistics | CINCINNA | OPP |
|-----------------------|-----------|------------|
| SCORING | 280 | 166 |
| Points Per Game | 35.00 | 20.75 |
| FIRST DOWNS | 156 | 149 |
| Rushing | 75 | 74 |
| Passing | 75 | 64 |
| Penalty | 6 | 11 |
| RUSHING YARDAGE | 1355 | 1201 |
| Yards gained | 1471 | 1401 |
| Yards lost | 116 | 200 |
| Attempts | 246 | 274 |
| Avg Per Attempt | 5.5 | 4.4 |
| Avg Per Game | 169.4 | 150.1 |
| TDs Rushing | 18 | 12 |
| PASSING YARDAGE | 1748 | 1405 |
| Att-Comp-Int | 194-121-4 | 214-114-14 |
| Avg Per Attempt | 9.01 | 6.57 |
| Avg Per Catch | 14.45 | 12.32 |
| Avg Per Game | 218.50 | 175.63 |
| TDs Passing | 17 | 8 |
| TOTAL OFFENSE | 3103 | 2606 |
| Total Plays | 440 | 488 |
| Avg Per Play | 7.1 | 5.3 |
| Avg Per Game | 387.9 | 325.8 |
| KICK RETURNS: #-YARDS | 22-414 | 20-387 |
| PUNT RETURNS: #-YARDS | 6-90 | 10-30 |
| INT RETURNS: #-YARDS | 14-151 | 4--79 |
| KICK RETURN AVERAGE | 18.82 | 19.35 |
| PUNT RETURN AVERAGE | 15.00 | 3.00 |
| INT RETURN AVERAGE | 10.79 | -19.75 |
| FUMBLES-LOST | 5-5 | 8-7 |
| PENALTIES-YARDS | 55-495 | 34-300 |
| Avg Per Game | 61.88 | 37.50 |
| PUNTS-YARDS | 21-851 | 24-819 |
| Avg Per Punt | 40.52 | 34.13 |
| Net Punt Avg | 38.14 | 30.38 |
| KICKOFFS-YARDS | 48-2487 | 34-1656 |
| Avg Per Kick | 51.81 | 48.71 |
| Net Kick Avg | 33.75 | 31.24 |
| TIME OF POSSESSION | 03:14:59 | 04:22:26 |
| Per Game | 24:22 | 32:48 |
| 3RD-DOWN CONVERSIONS | 38-86 | 43-100 |
| 3rd-Down Pct | 44.19% | 43.00% |
| 4TH-DOWN CONVERSIONS | 9-17 | 6-14 |
| 4th-Down Pct | 52.94% | 42.86% |
| SACKS BY-YARDS | 15-30 | 8-44 |
| MISC YARDS | 0 | 0 |
| TOUCHDOWNS SCORED | 39 | 22 |
| FIELD GOALS-ATTEMPTS | 4-7 | 5-7 |
| ON-SIDE KICKS | 0-0 | 0-0 |
| RED-ZONE SCORES | 22-26 | 19-25 |
| RED-ZONE TOUCHDOWNS | 20-26 | 15-25 |
| PAT-ATTEMPTS | 29-34 | 15-19 |
| ATTENDANCE | 0 | 0 |
| Dates-Avg Per Date | 5-0 | 3-0 |
| Neutral Site #-Avg | - | 1-0 |

| Conf | Date | Opponent | WL | Score | Record | Time | Attend |
|------|-----------|--------------------------|----|-------|---------|------|--------|
| | 8/18/2023 | BEN DAVIS (IN) | L | 28-49 | 0-1 | 3:03 | 0 |
| | 8/25/2023 | vs Bishop Dweneeger (IN) | W | 57-0 | 1-1 | 1:45 | 0 |
| | 9/1/2023 | at East Central (IN) | L | 28-38 | 1-1 | | 0 |
| | 9/8/2023 | at Center Grove (IN) | L | 34-35 | 1-2 | | 0 |
| | 9/15/2023 | ST. XAVIER HIGH SCHO | W | 20-10 | | | 0 |
| | 9/22/2023 | CINCINNATI LASALLE | W | 28-20 | 2-3 , 1 | | 0 |
| | 9/29/2023 | at Cincinnati Elder | W | 38-7 | 3-3 , 2 | | 0 |
| | 10/7/2023 | SAINT IGNATIUS HIGH | W | 47-7 | 4-3 , 3 | | 0 |

* = Conference game

| Score by Quarters | 1st | 2nd | 3rd | 4th | OT | Total |
|----------------------|-----|-----|-----|-----|----|-------|
| Cincinnati Archbisho | 89 | 70 | 50 | 65 | 6 | 280 |
| Opponents | 42 | 46 | 23 | 48 | 7 | 166 |

2023 Archbishop Moeller Crusaders Athletics Football Overall Statistics (as of Oct 8, 2023)

| # | All Purpose | G | RUSH | RCV | PR | KR | IR | Total | AVG/G |
|----|-------------------|----------|-------------|-------------|-----------|------------|------------|-------------|---------------|
| 24 | Marshall, Jordan | 8 | 1109 | 184 | 0 | 70 | 0 | 1363 | 170.38 |
| 11 | Smith, Preston | 8 | 0 | 251 | 90 | 199 | 0 | 540 | 67.50 |
| 14 | Mason, Roman | 7 | 0 | 384 | 0 | 36 | 0 | 420 | 60.00 |
| 13 | Love, Jovan | 8 | 0 | 357 | 0 | 10 | 0 | 367 | 45.88 |
| | Jacon-duffy, Eli | 7 | 38 | 218 | 0 | 13 | 0 | 269 | 38.43 |
| 37 | Shade, Isaac | 8 | 167 | 60 | 0 | 0 | 0 | 227 | 28.38 |
| 18 | Fogler, Matthew | 6 | 0 | 180 | 0 | 0 | 0 | 180 | 30.00 |
| 5 | Robinson , Drew | 8 | 0 | 0 | 0 | 31 | 54 | 85 | 10.63 |
| 2 | Leonard , Nick | 6 | 0 | 0 | 0 | 0 | 61 | 61 | 10.17 |
| 88 | Hamilton, Sam | 3 | 0 | 56 | 0 | 0 | 0 | 56 | 18.67 |
| 22 | Jeffries , Carl | 1 | 23 | 27 | 0 | 0 | 0 | 50 | 50.00 |
| 80 | Khayo, Carson | 2 | 0 | 12 | 0 | 29 | 0 | 41 | 20.50 |
| | Jr, Desmon gault | 7 | 33 | -3 | 0 | 0 | 0 | 30 | 4.29 |
| 82 | Adams, Landen | 2 | 0 | 0 | 0 | 26 | 0 | 26 | 13.00 |
| 33 | French, Alex | 7 | 0 | 0 | 0 | 0 | 20 | 20 | 2.86 |
| 86 | Thomas, Ricky | 1 | 0 | 18 | 0 | 0 | 0 | 18 | 18.00 |
| 6 | Murphy , Lincoln | 6 | 0 | 0 | 0 | 0 | 15 | 15 | 2.50 |
| 25 | Simmons , Deacon | 2 | 4 | 0 | 0 | 0 | 0 | 4 | 2.00 |
| 87 | McCutchan, Cooper | 2 | 0 | 4 | 0 | 0 | 0 | 4 | 2.00 |
| 16 | Zielinski , Stosh | 2 | 1 | 0 | 0 | 0 | 0 | 1 | 0.50 |
| 1 | Rice, Micah | 8 | 0 | 0 | 0 | 0 | 1 | 1 | 0.13 |
| 12 | Josleyn, Tyler | 3 | -5 | 0 | 0 | 0 | 0 | -5 | -1.67 |
| 7 | Ponatoski, Matt | 8 | -15 | 0 | 0 | 0 | 0 | -15 | -1.88 |
| | Total | 8 | 1355 | 1748 | 90 | 414 | 151 | 3758 | 469.75 |
| | Opponents | 8 | 1201 | 1405 | 30 | 387 | -79 | 2944 | 368.00 |

2023 Archbishop Moeller Crusaders Athletics Football Overall Statistics (as of Oct 8, 2023)

| # | Defensive Leaders | GP | Tackles | | | | Sacks NO-YDS | Pass Defense | | | Fumbles | | Blocked | |
|----|---------------------|----------|------------|------------|--------------|-----------------|-----------------|---------------|-----------|----------|-------------|----------|----------|----------|
| | | | Solo | ASST | TOT | TFL-YDS | | INT-YDS | BU | QBH | RCV-YDS | FF | KICK | SAF |
| 33 | French, Alex | 7 | 18 | 35 | 53.0 | 4.5-12 | 1.0-8 | 1-20 | — | — | 2-20 | — | — | — |
| 40 | Paul, Kyler | 8 | 29 | 22 | 51.0 | 11.0-41 | 2.5-15 | — | 2 | — | 1-0 | 3 | — | — |
| 36 | Cuozzo, Connor | 8 | 20 | 16 | 36.0 | 4.0-26 | 2.0-15 | — | 1 | — | — | — | — | — |
| 15 | Hayes, Jewett | 8 | 15 | 20 | 35.0 | 7.0--40 | 3.0--47 | — | 3 | — | 2-0 | 2 | — | — |
| 1 | Rice, Micah | 8 | 15 | 19 | 34.0 | 1.0-1 | — | 1-1 | 3 | — | 1-0 | — | — | — |
| 4 | Daley, Griff | 7 | 19 | 10 | 29.0 | — | — | 1-0 | 1 | — | — | — | — | — |
| 3 | Hobbs, Karson | 8 | 11 | 13 | 24.0 | 0.5-0 | — | 2-0 | 5 | — | — | — | — | — |
| 46 | Kittle, Nolan | 7 | 9 | 13 | 22.0 | 2.0-4 | — | — | — | — | — | — | — | — |
| 5 | Robinson , Drew | 8 | 13 | 7 | 20.0 | — | — | 5-54 | 7 | — | — | — | — | — |
| 55 | Monahan, Nick | 7 | 6 | 11 | 17.0 | 3.0-7 | 0.5-1 | — | — | — | — | — | — | — |
| TM | Team | 8 | 16 | — | 16.0 | 1.0-1 | — | — | — | — | — | — | — | — |
| 9 | Coe, Tanner | 6 | 6 | 7 | 13.0 | 1.0-1 | — | — | 1 | — | — | — | — | — |
| 21 | Gearhart, Cooper | 7 | 11 | 2 | 13.0 | — | — | — | 3 | — | — | — | — | — |
| 99 | Gerke, Thomas | 4 | 4 | 9 | 13.0 | 3.0-14 | 1.0-9 | — | — | — | — | — | — | — |
| 6 | Murphy , Lincoln | 6 | 6 | 7 | 13.0 | — | — | 1-15 | — | — | — | — | — | — |
| 97 | Harris, Christian | 5 | 4 | 6 | 10.0 | 1.0-1 | — | — | — | — | — | — | — | — |
| 94 | Stuerenbe, Lucas | 3 | 2 | 7 | 9.0 | — | — | — | — | — | — | — | — | — |
| 98 | Adkins , Will | 3 | 4 | 4 | 8.0 | 1.5-5 | 1.0-5 | — | — | 1 | — | — | — | — |
| 92 | Hayes, Jonah | 5 | 2 | 6 | 8.0 | 1.0-4 | — | — | 1 | — | — | — | — | — |
| 50 | Foltz, Brady | 1 | — | 5 | 5.0 | 1.5-4 | 1.0-3 | — | — | — | — | — | — | — |
| 97 | Harri, Christian | 3 | 3 | 2 | 5.0 | 1.0-6 | 1.0-6 | — | — | — | — | — | 1 | — |
| 10 | Harris, EJ | 2 | 3 | 2 | 5.0 | — | — | — | 1 | — | — | — | — | — |
| 2 | Leonard , Nick | 6 | 3 | 2 | 5.0 | — | — | 3-61 | 5 | — | — | — | — | — |
| 34 | Coe, Caleb | 3 | 3 | 1 | 4.0 | — | — | — | — | — | — | — | — | — |
| 96 | Reno, Rudy | 2 | 1 | 3 | 4.0 | 1.0-10 | 1.0-10 | — | — | — | — | — | — | — |
| 94 | Stuerenberg , Lucas | 3 | 1 | 3 | 4.0 | 1.0-1 | — | — | — | — | — | — | — | — |
| 50 | Foltz, Brody | 3 | 1 | 2 | 3.0 | — | — | — | — | — | — | — | — | — |
| 35 | Gravens, Jacob | 1 | 2 | 1 | 3.0 | — | — | — | — | — | 1-0 | — | — | — |
| 14 | Mason, Roman | 7 | 1 | 2 | 3.0 | — | — | — | — | — | — | — | — | — |
| 26 | Stonestree, Jayc | 2 | 2 | 1 | 3.0 | — | — | — | — | — | — | — | — | — |
| 91 | Vallier , Dominic | 1 | 1 | 2 | 3.0 | 1.0-5 | 1.0-5 | — | — | 1 | — | 1 | — | — |
| 4 | Daley, Griffin | 1 | 1 | 1 | 2.0 | — | — | — | — | — | — | — | — | — |
| 18 | Fogler, Matthew | 6 | — | 2 | 2.0 | — | — | — | — | — | — | — | — | — |
| 43 | Maupin , Landon | 2 | 1 | 1 | 2.0 | — | — | — | — | — | — | — | — | — |
| 89 | Nelson, Charlie | 1 | 1 | 1 | 2.0 | — | — | — | — | — | — | 1 | — | — |
| 28 | Shroyer, Carson | 1 | — | 2 | 2.0 | — | — | — | — | — | — | — | — | — |
| 42 | Beresh, Alex | 2 | — | 1 | 1.0 | — | — | — | — | — | — | — | — | — |
| 29 | Byes, Christian | 1 | 1 | — | 1.0 | — | — | — | 1 | — | — | — | — | — |
| 35 | Cravens , Jacob | 1 | — | 1 | 1.0 | — | — | — | — | — | — | — | — | — |
| 51 | Currin, Drew | 1 | 1 | — | 1.0 | — | — | — | — | — | — | — | — | — |
| 8 | Jacon-duffy, Eli | 7 | 1 | — | 1.0 | — | — | — | — | — | — | — | — | — |
| 13 | Love, Jovan | 8 | 1 | — | 1.0 | — | — | — | — | — | — | — | — | — |
| 24 | Marshall, Jordan | 8 | 1 | — | 1.0 | — | — | — | — | — | — | — | — | — |
| 87 | McCutchan, Cooper | 2 | — | 1 | 1.0 | — | — | — | — | — | — | — | — | — |
| 63 | Milov, Alex | 1 | — | 1 | 1.0 | — | — | — | — | — | — | — | — | — |
| 59 | Richard, Chibuike | 1 | 1 | — | 1.0 | 1.0-3 | — | — | — | — | — | — | — | — |
| 47 | Shine, Oliver | 1 | 1 | — | 1.0 | — | — | — | — | — | — | — | — | — |
| 26 | Stonestreet, JayC | 1 | 1 | — | 1.0 | — | — | — | — | — | — | — | — | — |
| 16 | Zielinski , Stosh | 2 | — | 1 | 1.0 | — | — | — | — | — | — | — | — | — |
| | Total | 8 | 242 | 252 | 494.0 | 48.0-106 | 15.0-30 | 14-151 | 34 | 2 | 7-20 | 7 | 1 | — |
| | Opponents | 8 | 283 | 96 | 379.0 | 32.0-101 | 8.0-44 | 4--79 | 14 | 1 | 5-99 | 4 | 1 | — |